



PURE MINIMAL SIDE CHANNEL SHOWER TRAYS (60EQ)



DIMENSIONS (see page 2)

- Width: from 700 to 1000 mm
- Length: from 1000 to 2000 mm
- Thickness: from 24 to 27 mm



Lacquered cap

MATERIAL

- Tray:** (mixture of polyurethane resin, silica and other minerals).
Grate: it is manufactured in the same finish as the shower tray, and in the same colour.

PRODUCT CHARACTERISTICS

- Anti-slip finish: class III (testing method: UNE-ENV 12633: 2003)
- Anti-bacteria and fungistatic properties.
- Tray may be cut to measure to fit the area where it is to be installed.
- Installation available either on top of floor level, elevated or flush with floor.
- Totally flat on the underneath.
- 100% waterproof, does not require membrane coating.
- Easy installation using silicone, polyurethane putty or MS.
- Ultraviolet (UV) protection.
- Easy to repair.
- Dual Lock™ fixing system between cover and tray.

INCLUDED

- Shower tray.
- Lacquered cap.
- L-Drain waste².
- 45° elbow (Ø50/Ø40).
- Hook.
- Assembly instructions and Owner's manual.
- Cardboard box.

PACKAGING

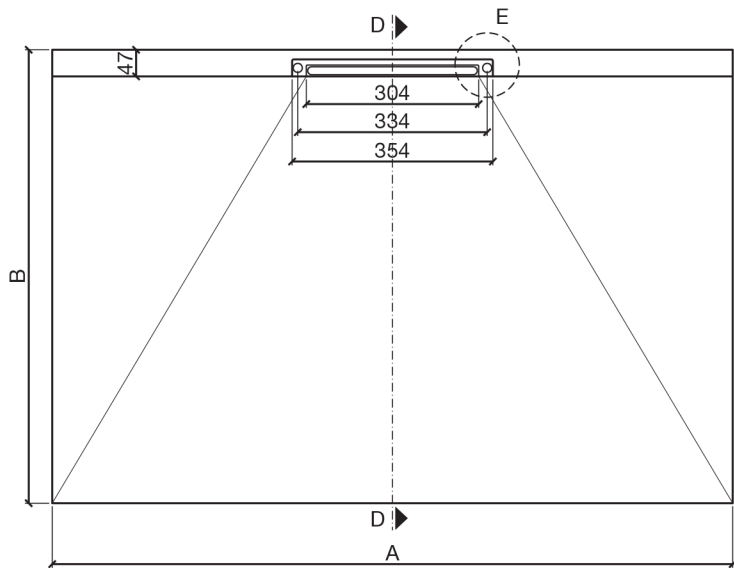
- Individually packaged in high-resistance box.
- Cardboard box with a plywood perimetral frame, adapted to the dimensions of each tray, with a screw-on lid to make it easier to open once it reaches its destination.

¹ Available in any other colour to order.
² Data sheet available.

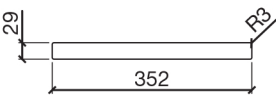


PLANS

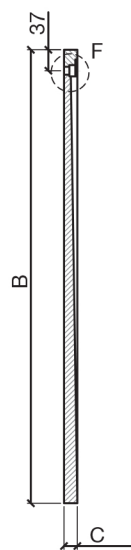
TOP VIEW



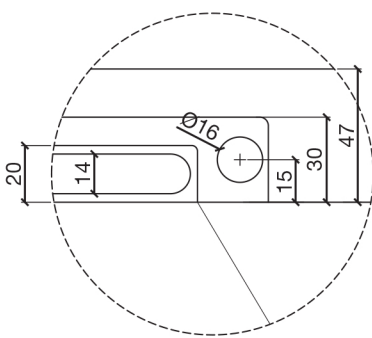
WASTE CAP



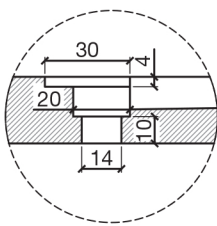
SECTION D



DETAIL E



DETAIL F



AVAILABLE MOULDS (measurements in mm)		
A	B	C
1000	700	24
1200		
1400		
1600		
1800		
2000		
1000	800	
1200		
1400		
1600		
1800		
2000		
1000	900	25
1200		
1400		
1600		
1800		
2000		
1000	1000	27
1200		
1400		
1600		
1800		
2000		

Approximate measurements, tolerance 5 mm.
This tolerance may be modified without prior warning.

CONDITIONS OF USE AND MAINTENANCE

Follow these simple recommendations and you can enjoy your Livinghouse shower tray.

For routine cleaning (after showering) simply rinse the tray with water and ensure that there is sufficient ventilation in the bathroom.

For thorough cleaning, rinse the tray with water and any commercial product available for bathroom cleaning on the market and clean using a cloth or a non-abrasive sponge. It is advisable to avoid the use of cleaning or disinfecting products which contain alcohol. Abrasive products (e.g.scourers) are not suitable either as they may damage the shower tray surface.

In terms of maintenance, a descalant product in the form of a spray for cleaning shower screens can be used; these products should be applied to the tray and then rinsed. The use of these products is especially advisable in areas or communities with very hard water (with a lot of lime).

For persistent stains, see the section titled “CLEANING OR REMOVING PERSISTENT STAINS © COMPONENTS”.

The shower tray development process now includes a technology (based on nanotechnology) used in their bathroom production to provide them with fungistatic, bacteriostatic (ISO 22196:2007) and hydrophobic properties.

This technology consists of the application of a topcoat over our compound which reacts with the element thus transforming its exterior properties.

added value for an unlimited time, which results in many advantages for the end user:

- Safer and more hygienic.
- Saves water, reduces cleaning and disinfecting products use.
- Reduces the risk of fungal growth and contagion (ideal for public areas).
- Given that these materials are inert, it is not a harmful product for the user which means that no preventive measure has to be taken.

PRODUCT SPECIFICATIONS

DECLARATION OF PERFORMANCE

Nº SI01

1 - Product:

Pure-Minimal-Side-Channel-Shower-Trays

2 - Name and address:

3 - Use:

Domestic use for personal hygiene

4 - System of assessment:

System 4

5 - Notified Body:


Ensatec S.L. Nº1668

6 - Declared performance:

Essential Characteristics	Performance	Harmonised technical specification	Report and date
Cleanability	Class 1	UNE EN 14527:2006 + A1:2010	
Durability	Class 1	UNE EN 14527:2006 + A1:2010	
Chemical agents resistant	Correct	UNE EN 14527:2006	231394.01 4-10-2013
Resistance against sudden temperature changes	Correct	UNE EN 14527:2006	231393.01 4-10-2013
Water absorption	Correct	UNE 127020:1999 EX	118514.02 7-10-2013
Frost resistance	Frost resistant	UNE 67028:1997 EX	118514.02 7-10-2013
Shock resistance	Does not occur	UNE EN 14158:2004	118514.02 7-10-2013
Adherence to the base support	Correct	UNE EN 1015-12:2000	118514.02 7-10-2013
Surface hardness to scratching	>7	UNE 67101/1M:1992	173410.02 4-10-2013
Sliding resistance (Smooth Texture)	Class 3 (Class 2)	UNE EN V 12633:2003	237394 26-06-2014
Resistance to surface abrasion	Class 4	UNE-EN-ISO 10545-7	52867 18-10-2013

The performance of the product identified in point 1 is in conformity with the declared performance in point 6.

This declaration of performance is issued under the sole responsibility of the manufacturer identified in point 2.



Nájera, July 1st 2013

Manuel Rocandio (Technical Manager)

OTHER PROPERTIES

- Linear expansion coefficient (heat):
0.000008 mm/°C UNE-EN ISO 10545-8:1994 (DIN UNE-EN ISO 10545-8)
- Linear expansion coefficient (cold):
-0.000002 mm/°C UNE-EN ISO 10545-8:1994 (DIN UNE-EN ISO 10545-8)

Resistance to chemical products

PRODUCT TESTED	EXPOSURE TIME	DETERIORATION
Wine vinegar	8 h	A
Bleach	1 h	A
Window cleaning agent	8 h	A
Iodine	1 min	B
General cleaner (<5% anionic surfactants)	8 h	A
Degreasing agent (<5% anionic surfactant agents and polycarboxylates and 5%-15% non-ionic surfactant agents)	8 h	A
Limescale remover	8 h	A
Hair dye (medium colour)	1 min	B
Hair dye (dark colour)	1 min	D
Vegetable oil for human consumption	8 h	A
Makeup remover liquid	8 h	A
Acetone	1 min	A
Alcohol 96º	8 h	A
Hydrogen peroxide	8 h	A
Merbromin	1 min	B
Organic solvent	1 min	A
Fruit juice	8 h	A
Coffee	8 h	A
Red wine	8 h	A
Lipstick	8 h	A
Ammonia	8 h	A
Ink	8 h	A
Permanent marker	8 h	A
Biro	8 h	A
Pencil	8 h	A
Hydrochloric acid solution	1 h	B

The classification used corresponds to the following codes:
A: Without important visible changes.
B: Slight change of colour.
C: Moderate change in colour.
D: Significant change in colour.
E: Layer etched.

Wastes

MATERIAL

- Manufactured in ABS plastic with a high heat resistance.
- All the washers used to connect the shower to the chute are stainless steel.
- The joints are made of rubber.
- The screws are stainless steel.

PRODUCT CHARACTERISTICS

- All our wastes are manufactured in Germany.
- All the wastes have an output diameter of 40 mm (Adaptors available).
- The waste unit is composed of three elements:
 - The main waste element which connects to the general installation drain.
 - The join preventing water leaks between the waste and the tray.
 - The metal washer which joins the waste with the tray.
- Self cleanable.

SPECIFIC CHARACTERISTICS

- Horizontal waste outlet with a height of 8 cm.
- Drains up to 0.55 litres per second.
- Complies with the standard EN-274 except the drain diameter.

INCLUDED

- The waste (main element which connects with the general installation drain).
- Bilabial rubber washer.
- Metallic washer.
- Screws.
- Instructions.
- The L-Drain waste includes the 45° elbow.

OPTIONS

- Possibility of eliminating the waste effect.
- 45° elbow (Ø40/Ø50).
- Inch adapter (From Ø40 to Ø1 1/2").

