

# **APP MANUAL FOR STEAM GENERATOR**

With the addition of the WF50 WIFI box, the GS08M steam generator be controlled remotely via our APP on your mobile. Please note that you will need an existing wireless router.

## 1.Download APP on mobile

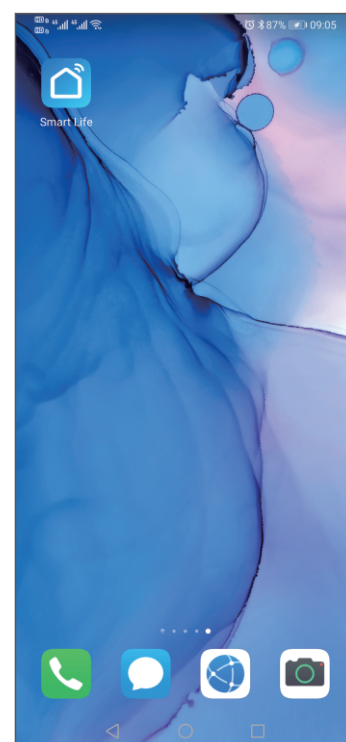
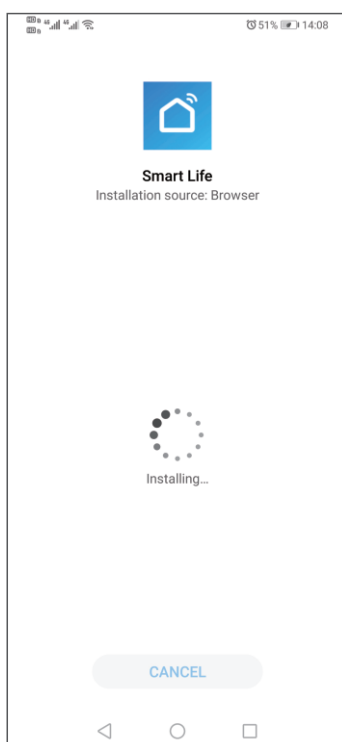
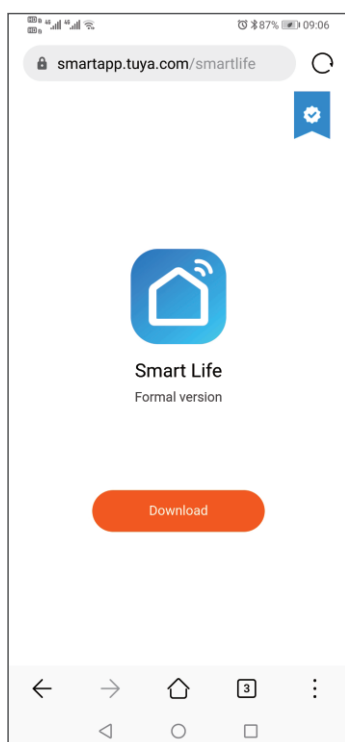
A. For Android phone,  
Scan QR to install APP.

B. For IOS Phone (Iphone)  
Search “**Smart Life**” in APP STORE directly to download APP



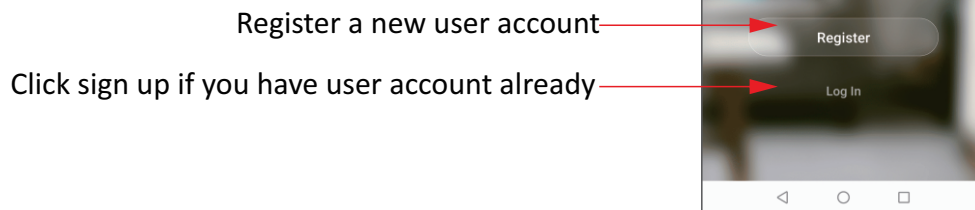
Android QR Code

C. Enter download interface as show on pictures,click“**download**”,choose“**Installation**”to download the APP can be downloaded and installed.



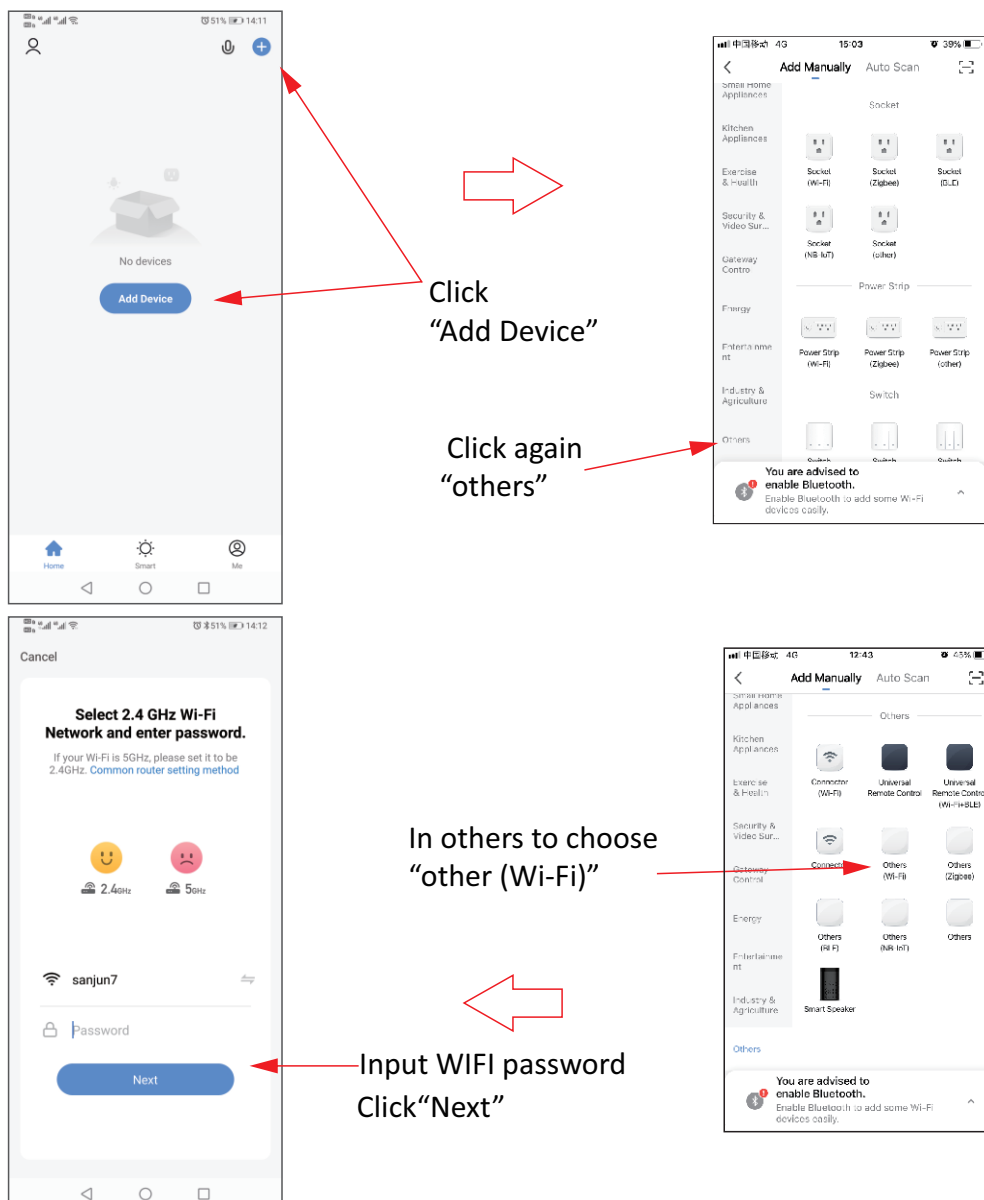
## 2.User registration and sign in

Click APP logo“**Smart Life**” to enter into login interface as picture shown, if it's first time login, need to register new user account as guide.




## 3.Adding your steam generator to the App List

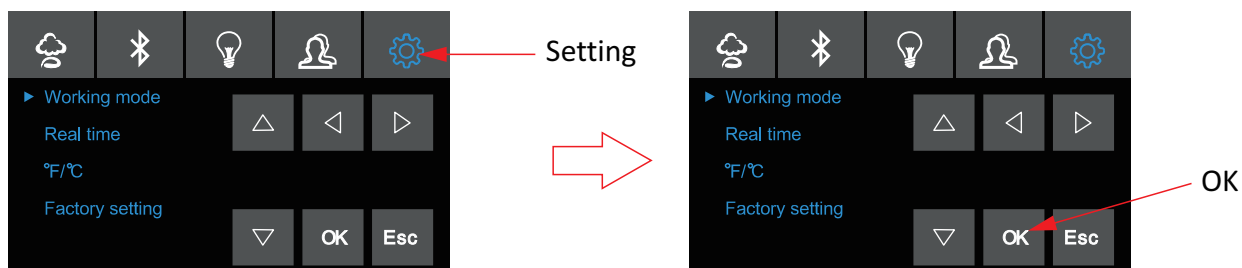
On the first time use, you have to add your steam generator to the device list.



Before you do this, you need to put the steam generator into WIFI matching mode. there are two ways to get steam generator into WIFI matching state as below:

#### A.

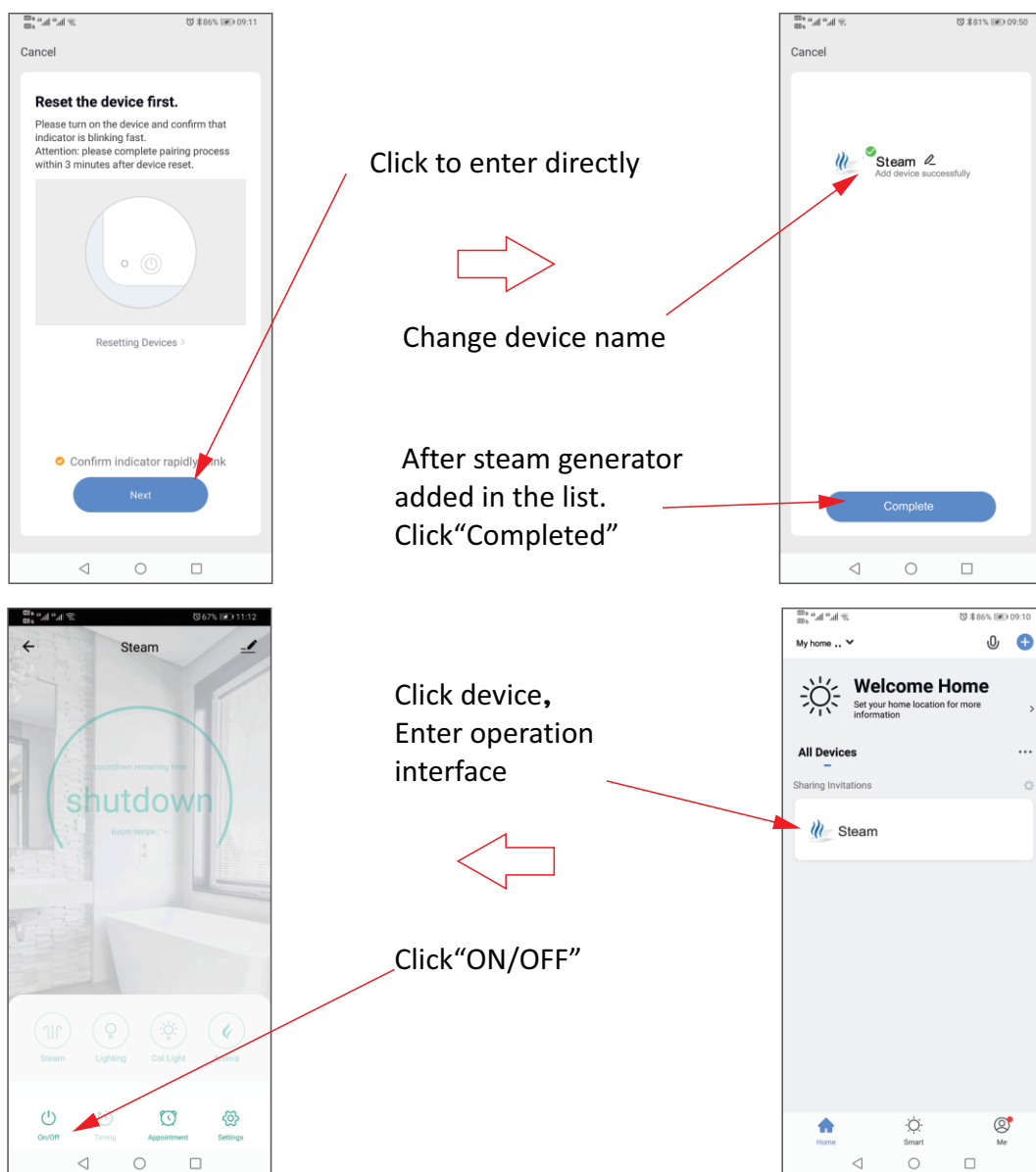
1. Keypad power on in 5 minutes, choose setting interface as pictures below:
2. Touch the button  to enter the setting interface as displayed in picture.
3. Move the arrow to **"factory settings"**.
4. Keep pressing button **"OK"** for 2seconds, you will hear a "BEE" sound, the system is now in the WIFI matching state, you can see LED on WIFI box flashing.



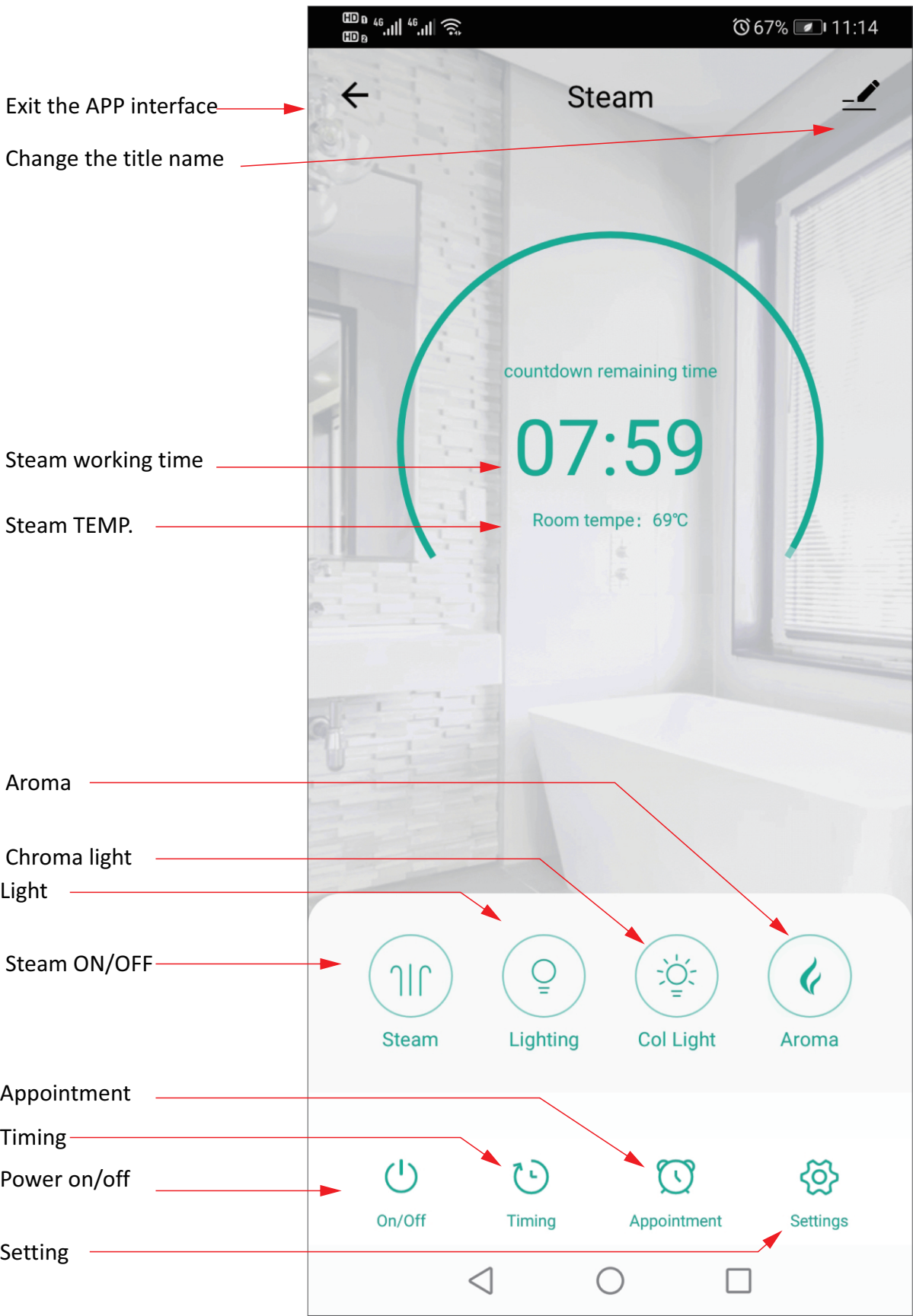
#### B.

1. Keep pressing matching button on WIFI box till LED light flashing. This time the system is in WIFI matching state.

When steam generator is in matching state, please enter WIFI password on APP as picture below: click **"Next"** to add steam generator in APP and enter into product operation interface.

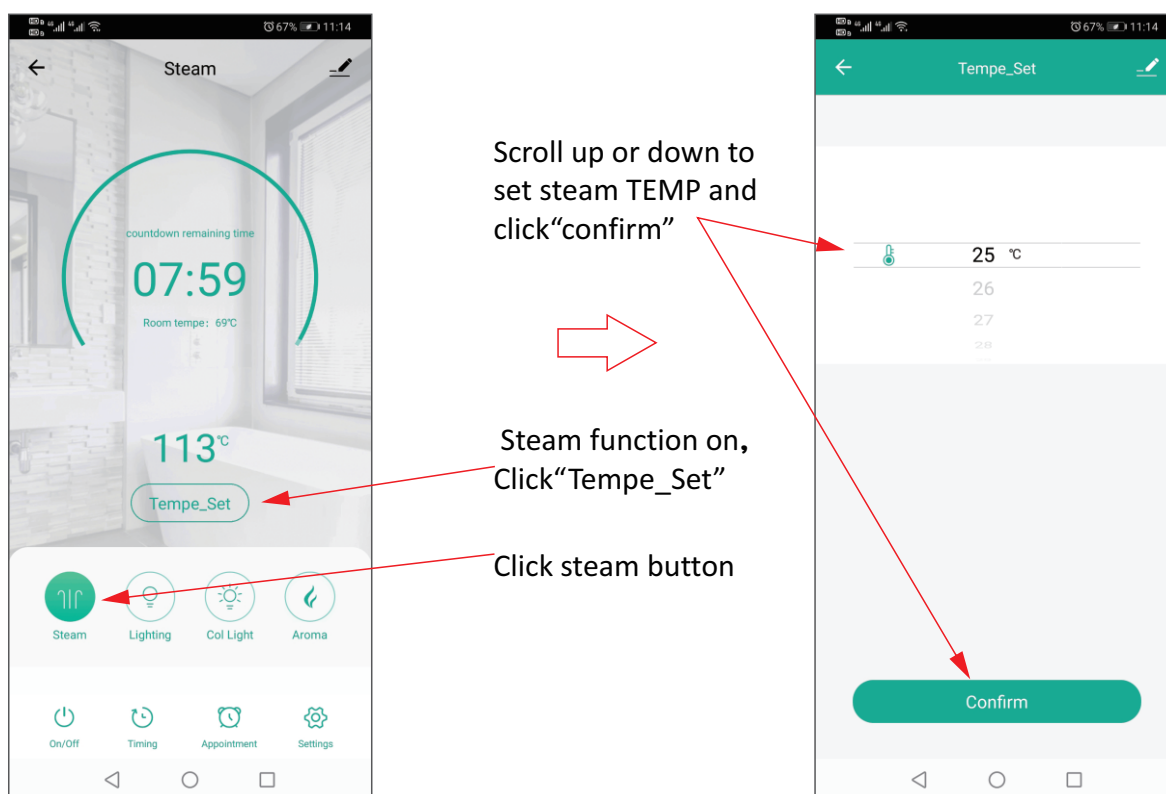


4.Operation interface of steam generator

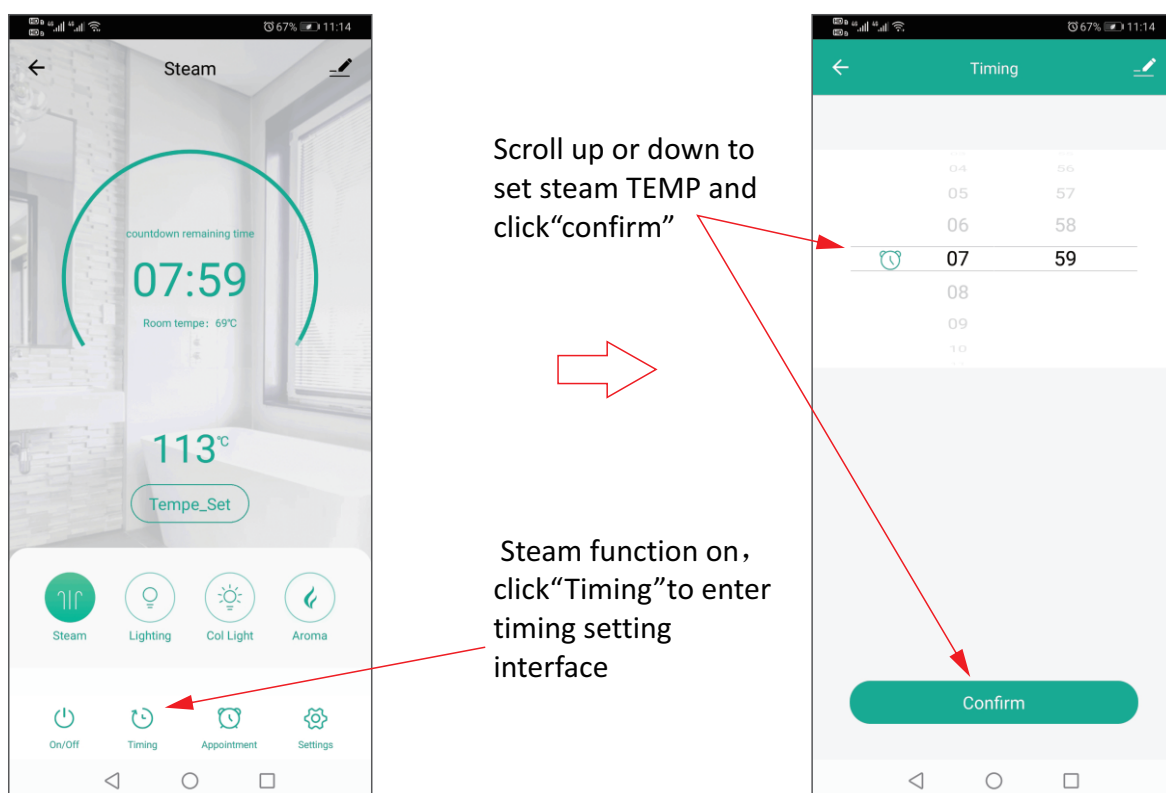


## 5.Function

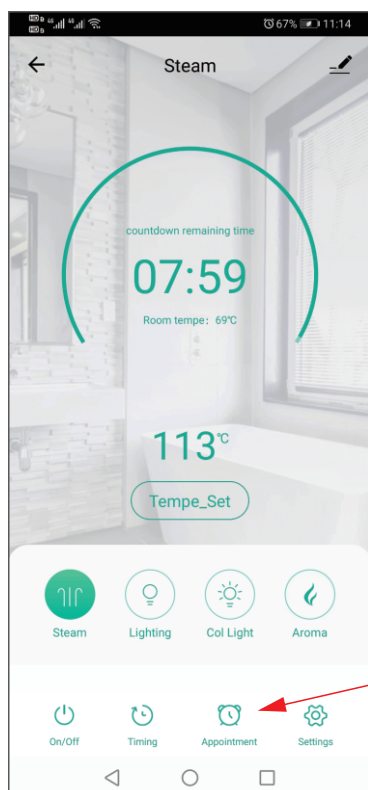
### A. Steam temperature Setting



### B. Working Time Setting



## C. Appointment Setting

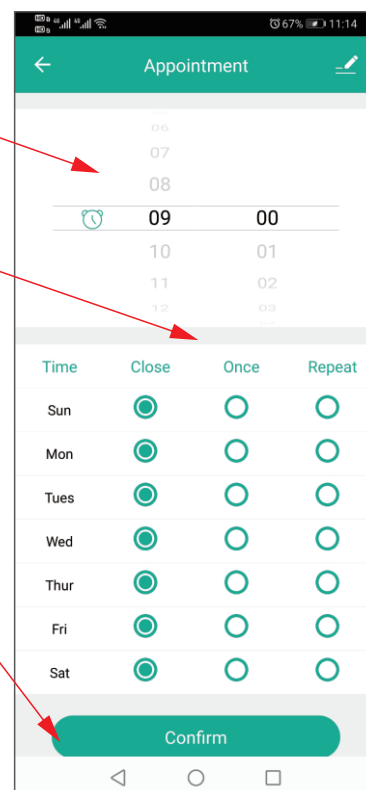


Scroll up or down to set steam working time.

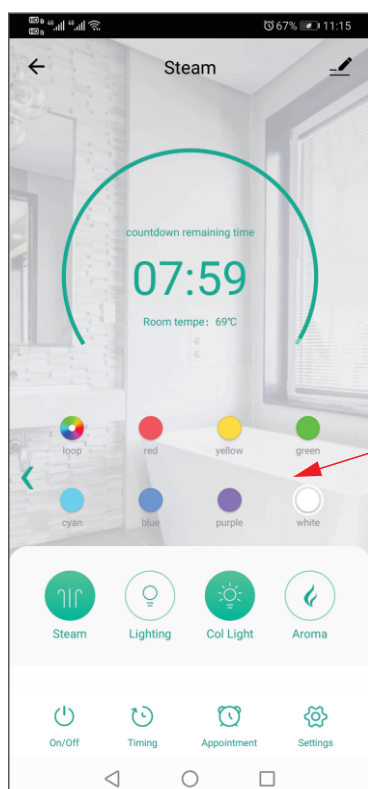
Click Monday to Sunday to set working mode

Click "Confirm" to sure setting and quit the interface

Click "Appointment"



## D. Chroma Light



Open the steam and chroma light at same time, press relative color icon to set light color we want. When we choose the chroma light icon, light change color automatically.



## E. Normal Light and Aroma

Steam function on, click on the "**light**" button switch on/off the normal light.  
When steam function on, click aroma button to switch on/off the aroma function.

## F. Setting

### 1. Auto. clean function

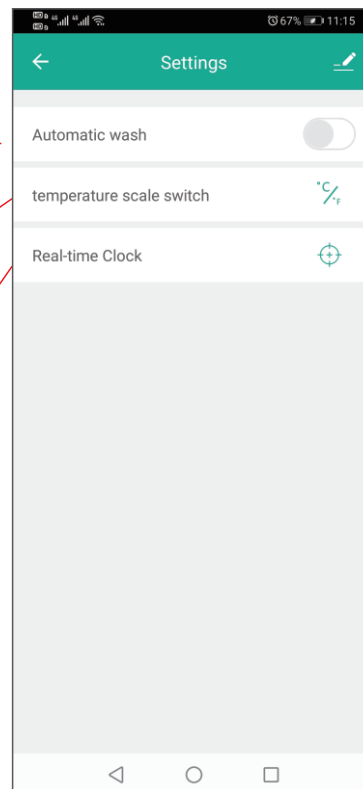
When steam function off, click the "Automatic wash" to start cleaning function.

### 2. Temperature unit switch

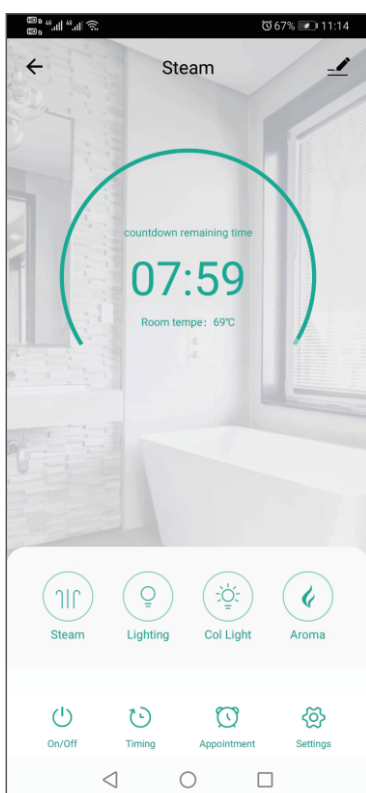
Click temperature scale switch, the temperature unit can be switched between Celsius and Fahrenheit.

### 3. Real-time Clock

Click the real time clock to get real clock time is same as the clock shows on keypad.



## G. Parameter Settings

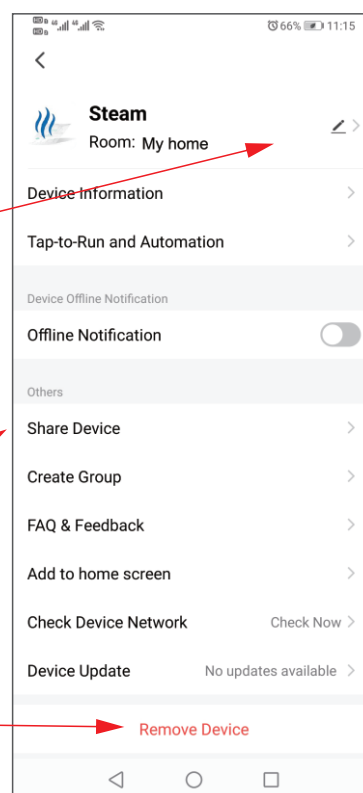


Click here to set more function

Device name Settings

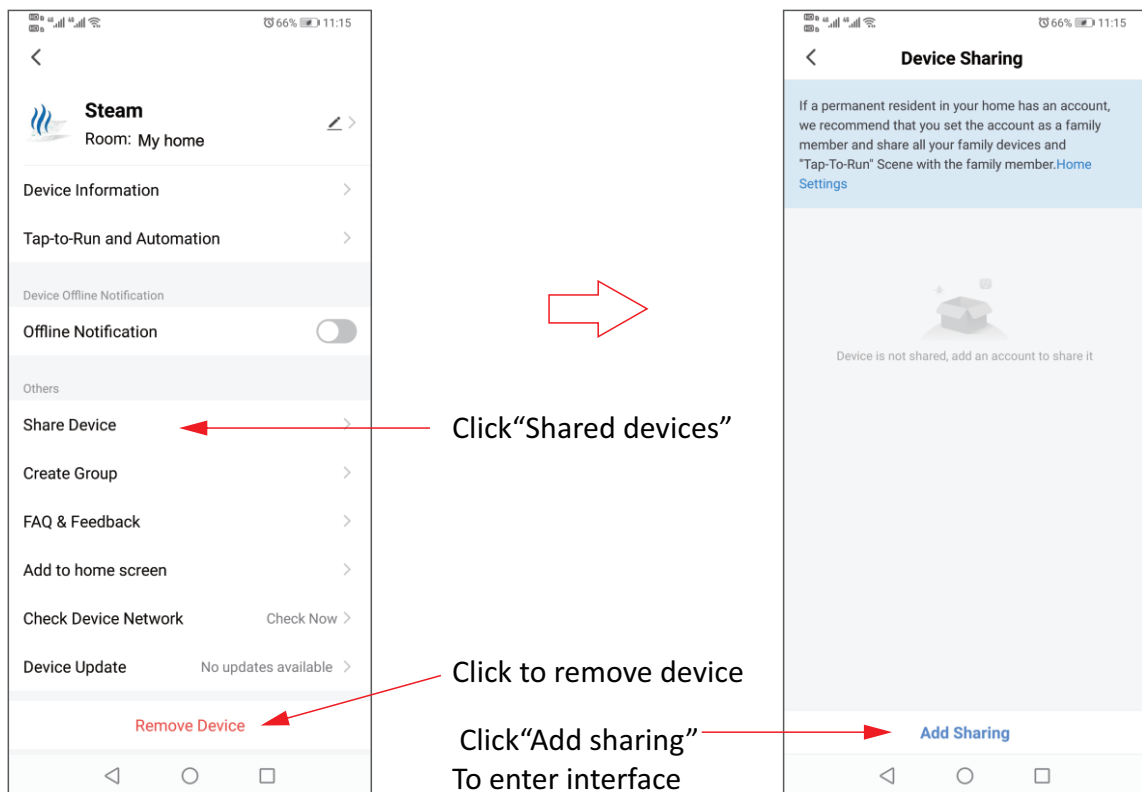
Share devices with others

Click to remove device





## H. Share device and remove device



Enter the user account who you would like to share the device with him. But this user account should be registered on "smart life" APP.

After input the user account, click "finish"

