

SKINNY RAINFALL SHOWER HEAD



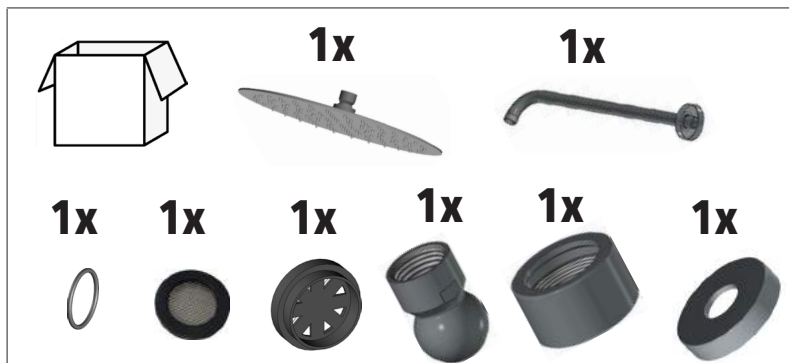
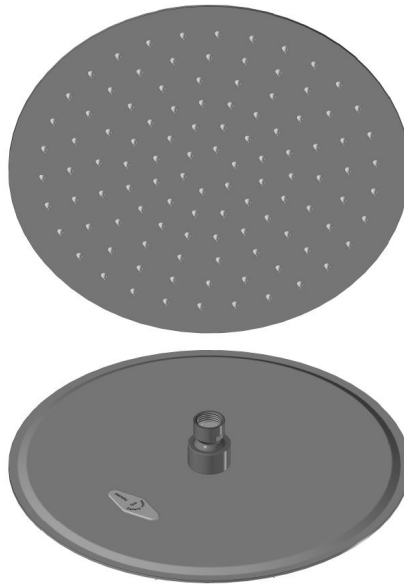
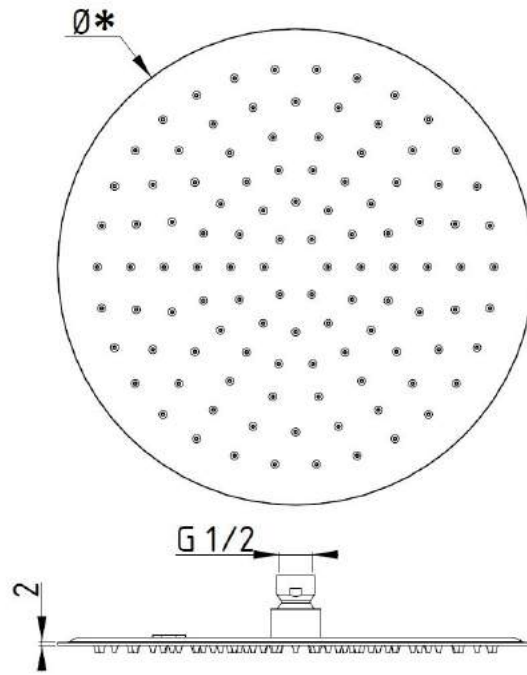
LIVINGHOUSE.CO.UK

TEL: 01722 415000

EMAIL: SALES@LIVINGHOUSE.CO.UK

ASSEMBLY INSTRUCTIONS





IT- L'apparechio deve essere installato da personale abilitato ai sensi e per l'effetto delle leggi in vigore.
EN - According to the law, all installation and maintenance operations require a qualified person.

IT - Prima dell'installazione
EN - Before installation



10'

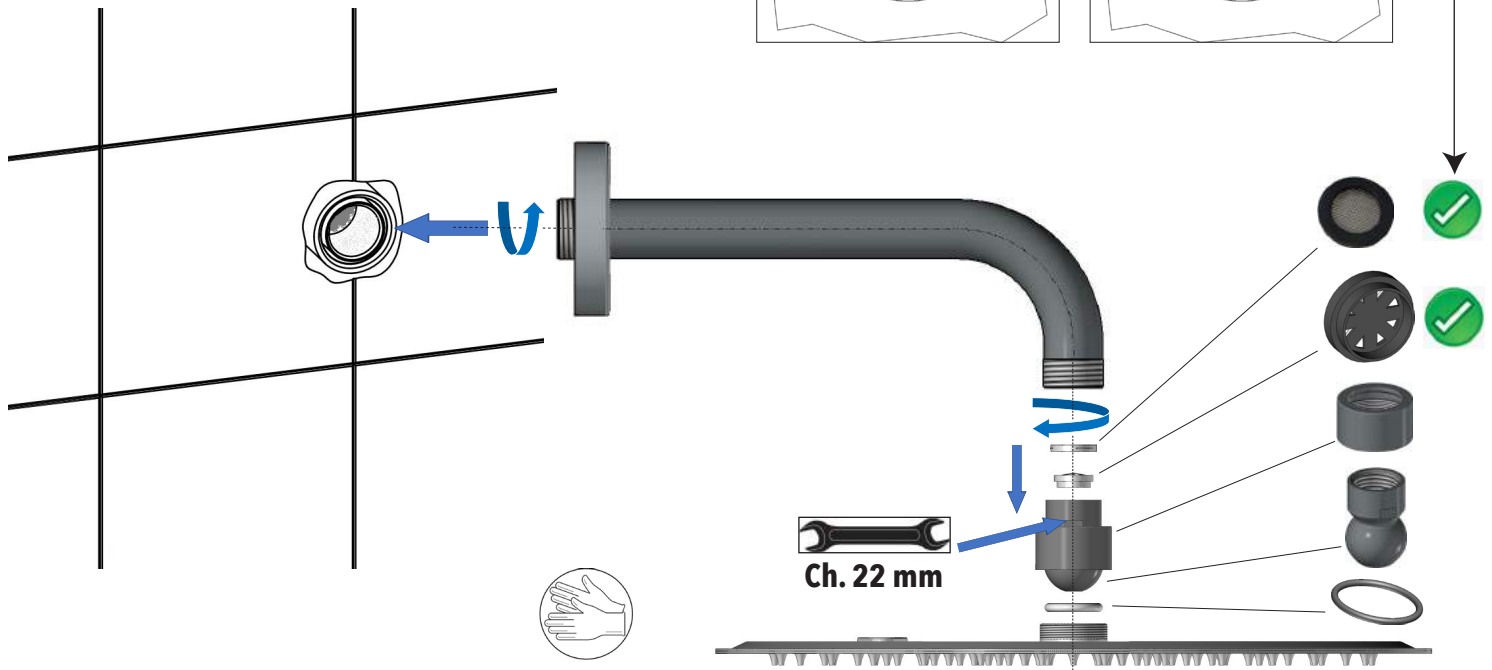
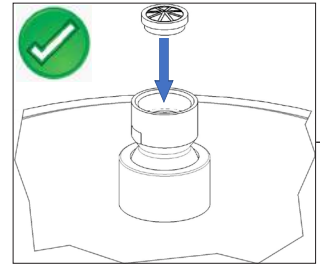
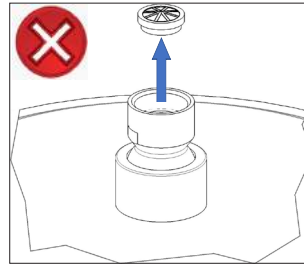


IT - RACCOMANDAZIONI

Montare sempre il regolatore di portata e il filtro.

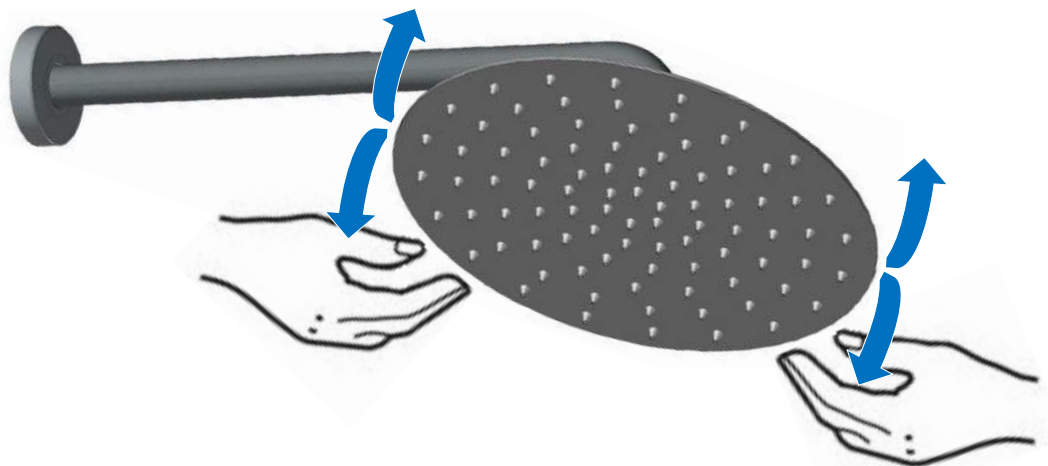
EN - RECOMMENDATION

Always fit the flow regulator and filter.

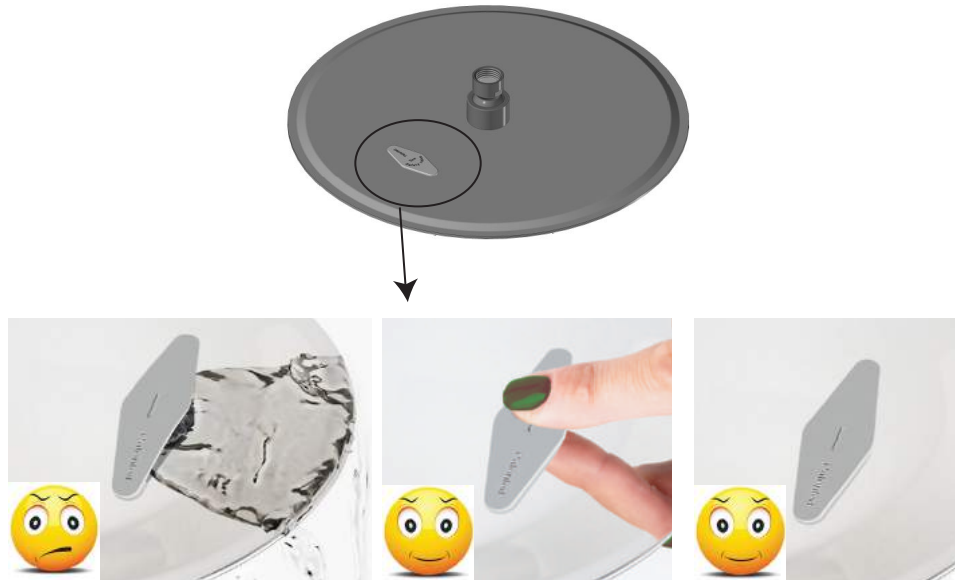


IT - Orientare il soffione.

EN - Orient the shower head.



 **IT - Attenzione, valvola proporzionale.**
EN - Warning, Proportional valve.



IT-LA GARANZIA DEL PRODOTTO NON COPRE

L'utilizzo improprio.
L'errata predisposizione dell'impianto idraulico.
Danni causati da depositi di calcare o altre impurità.
Detergenti non adatti.

EN-NOT COVERED BY PRODUCT CARE

Not correct use.
Incorrect setup of the hydraulic system.
Water impurities or limeston.
Not suitable detergents.



IT-DUE ANNI DI GARANZIA DEL PRODOTTO

Contro i difetti o vizi di fabbricazione.

EN-TWO-YEAR PRODUCT CARE

Against defects or defects of fabrication.

IT - ATTENZIONE: Si declina ogni responsabilità relativa ad eventuali inesattezze contenute in queste istruzioni dovute ad errori di trascrizione.

EN - WARNING: We decline all responsibility and eventual inaccuracy contained in the instructions due to transcript errors.