

APEX WALL MOUNTED SHOWER HEAD



LIVINGHOUSE.CO.UK

TEL: 01722 415000

EMAIL: SALES@LIVINGHOUSE.CO.UK

INSTALLATION INSTRUCTIONS

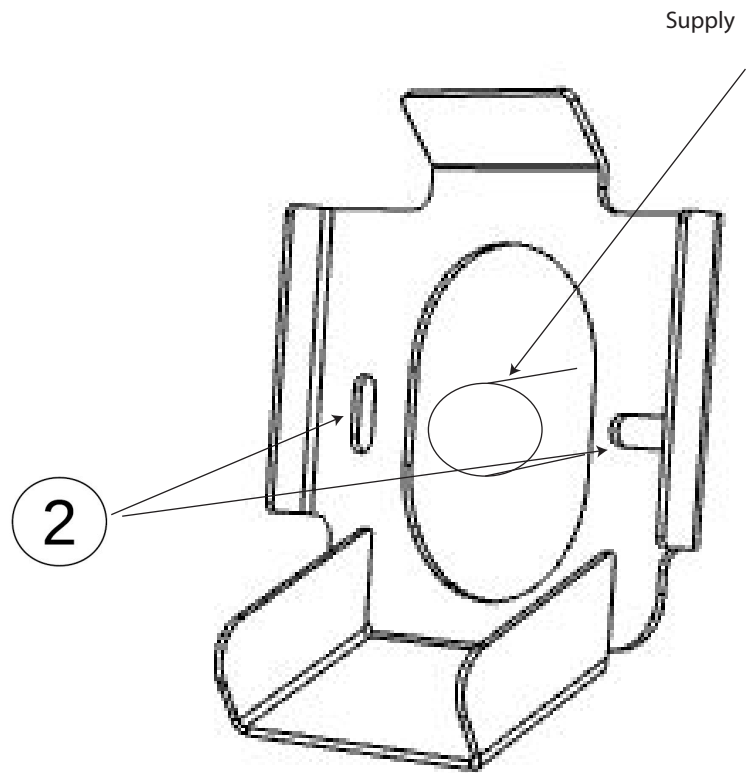
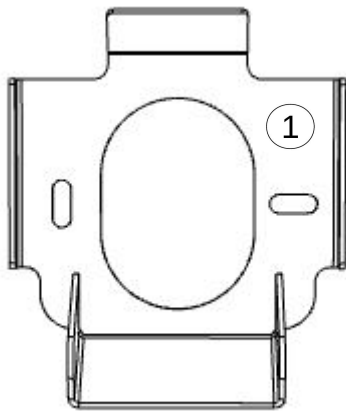


ATTENTION: PLEASE READ BEFORE CONTINUING

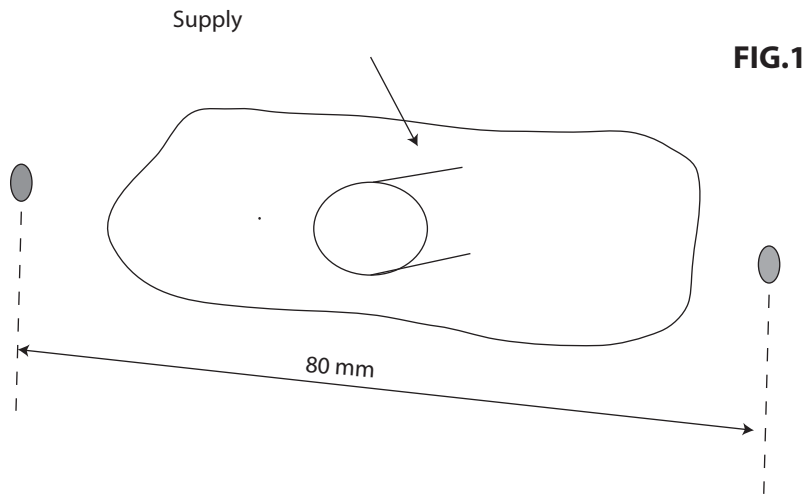
Your new shower head is made of stainless steel, a hygienic material that does not leave behind any traces of chromium or zinc. Moreover, the stainless steel distinguishes itself by longevity and its characteristic surface, which remains unchanged in time. The faucets and plumbing must be inspected and rinsed according to the enacted rules. Before connecting each of the products, always install the filter gasket (supplied) between the shower head and the hydraulic system. We also recommend a filter system upstream of the system to avoid impurities that could irreparably damage the product.

This shower head must be installed with a maximum pressure of 2 bar, in case of higher pressure it is necessary to use a flow reducer(supplied).

This shower head can be damaged by the "water hammer" effect, which occurs when the flow of water inside of a pipe or a closed lock accelerates abruptly. When installing on a plasterboard, make sure that the showerhead is secured to the load-bearing structure.



Get ready for the installation by fetching from the package the support staff (1). Position it near the wall water supply paying attention to keep the supply line within the support staff. Mark with a pencil the two points where you shall drill the wall (2) making sure the staff is level.



Now you can drill the wall (Fig. 1) using a $\varnothing 10$ drill bit and then insert the two (provided) plugs.

FIG.2



FIG.3

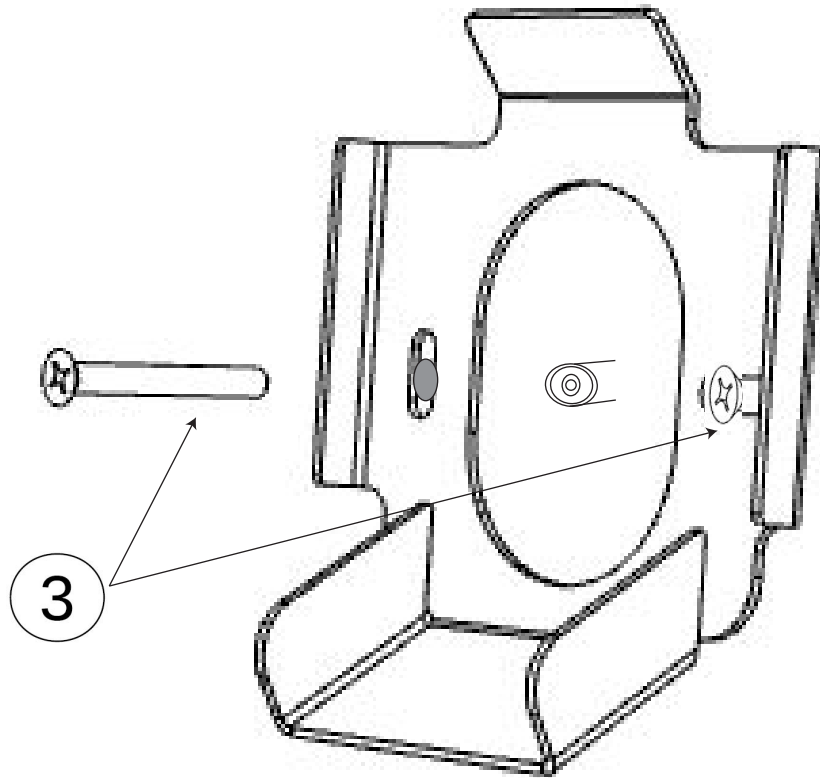


FIG.4

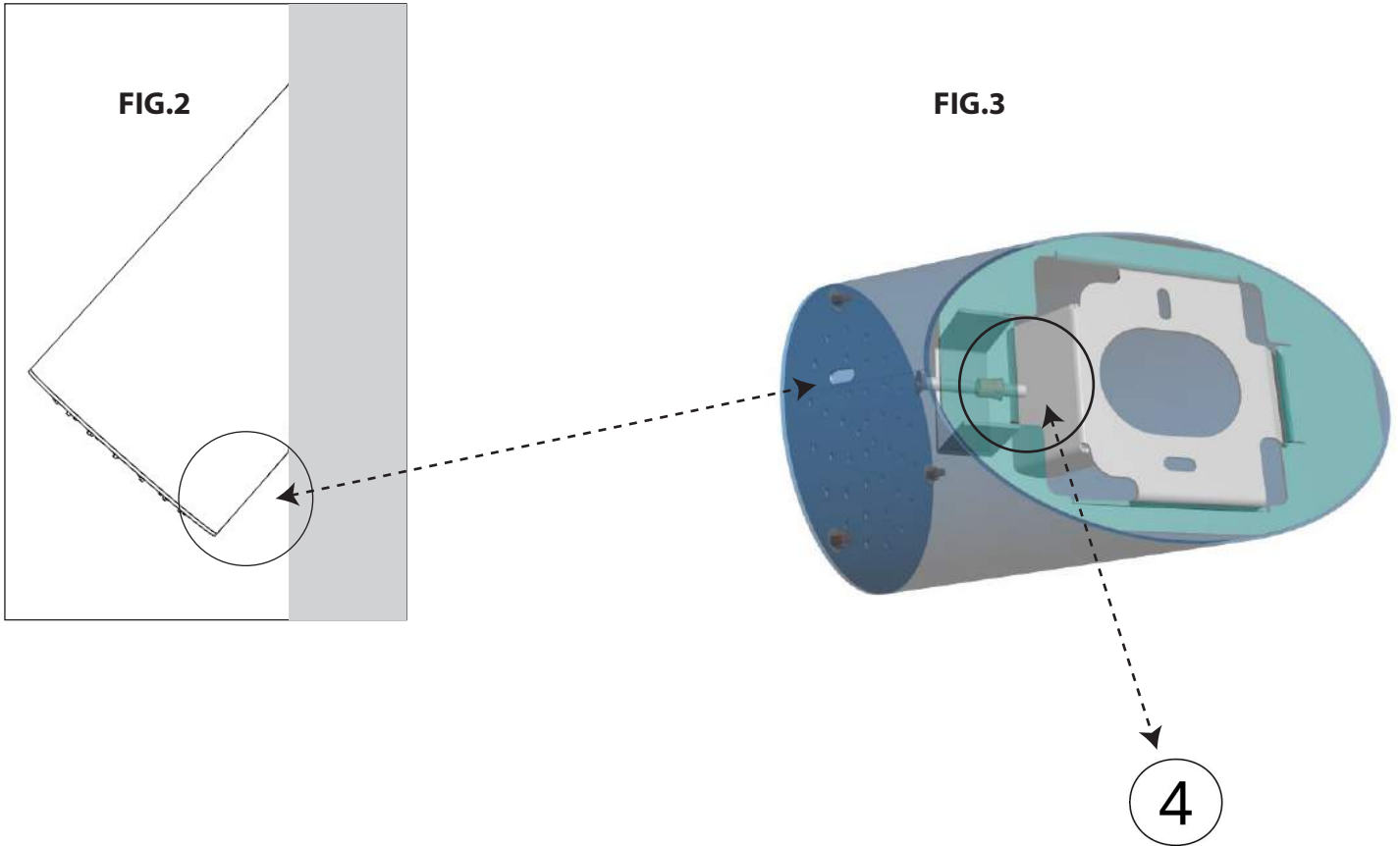


Pick from the package of the shower head the two supply joints (Fig. 2), already pre-assembled at the two ends of the supply lines.

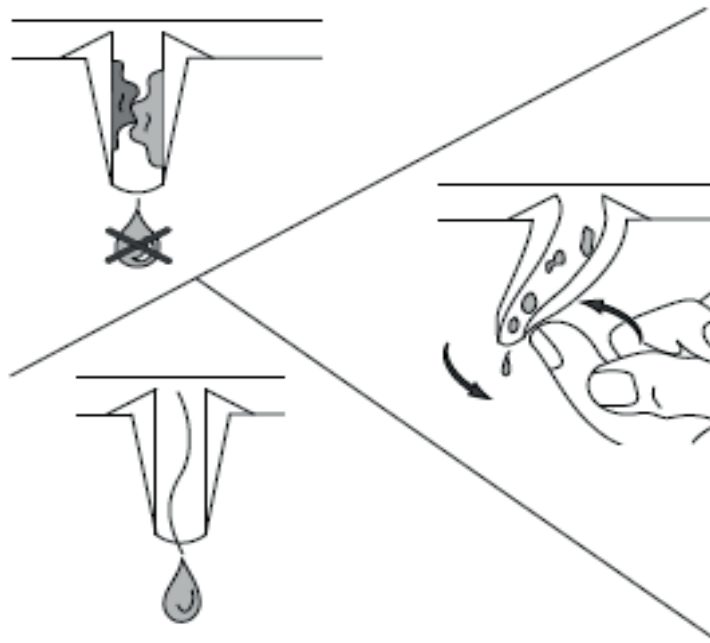
Connect them to the hydric setup making sure you first insert the flow limiters (Fig. 3 and Fig. 4).



Fetch the support staff (1) on Pag. 3 one more time and position it so that its eyelets overlap the previously inserted plugs and screw the bolts (Fig. 3) until they are tight. Now you can connect the provided hose, first to the shower head and then to the water supply while holding the shower head so to not to bend the hose.



Now lean it against the wall (Fig. 2) placing it on the support bracket paying attention to not to bend the supply hose. Fig 2 shows the area shown in Fig. 3: in this eyelet right below the showerhead you shall find the grub screw that, tightened with a 3 mm Allen key (not provided), will compress the shower head to the wall operating on the oblique part of the support bracket (4) that has been previously fixed.



WARNING

Your shower head is equipped with silicone nozzles during normal use they may become clogged: for a proper cleaning is sufficient to act on the single obstructed nozzle, by performing with small finger rotations acts, to rid it of all impurities.

In the case of constant use in the shower, we recommend a monthly thorough cleaning.

PRODUCT CARE - WARRANTY

EN - WARNING! THE INSURANCE DOES NOT COVER THE LIMESTONE'S DAMAGE AND DAMAGE CAUSED BY IMPURITIES.

The insurance does not cover the incorrect use of the equipment.

Recommendations of use:

- thoroughly flush the system before installing the equipment;
- periodically clean the nozzles from limestone deposits.

CLEANING OF METAL PARTS:

- Use soft cloth moistened in water and soap:
- wipe dry the shower head with a cloth after every use.

Advice:

- the installation of a filter system and a water softener extends the lifespan of the equipment:
- do not use alcohol, hydrochloric acid, phosphoric acid, bleach, chlorine and abrasive powder to clean it.

The device has a two-year warranty against manufacturing defects.

The warranty does not cover:

- different installation/use from what recommended in this instruction manual:
- the incorrect set up/installation of the water system:
- damages caused by limestone and water impurities:
- the use of improper cleaning materials.



LIVINGHOUSE.CO.UK

TEL: 01722 415000

EMAIL: SALES@LIVINGHOUSE.CO.UK
