

2 and 3 Function "Easy Fit"  
Shower Valve (81EC)



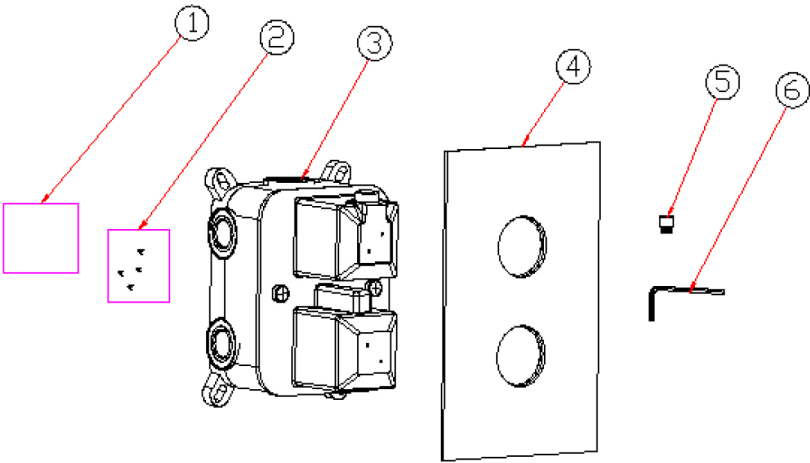
LIVINGHOUSE.CO.UK

TEL: 01722 415000

EMAIL: SALES@LIVINGHOUSE.CO.UK

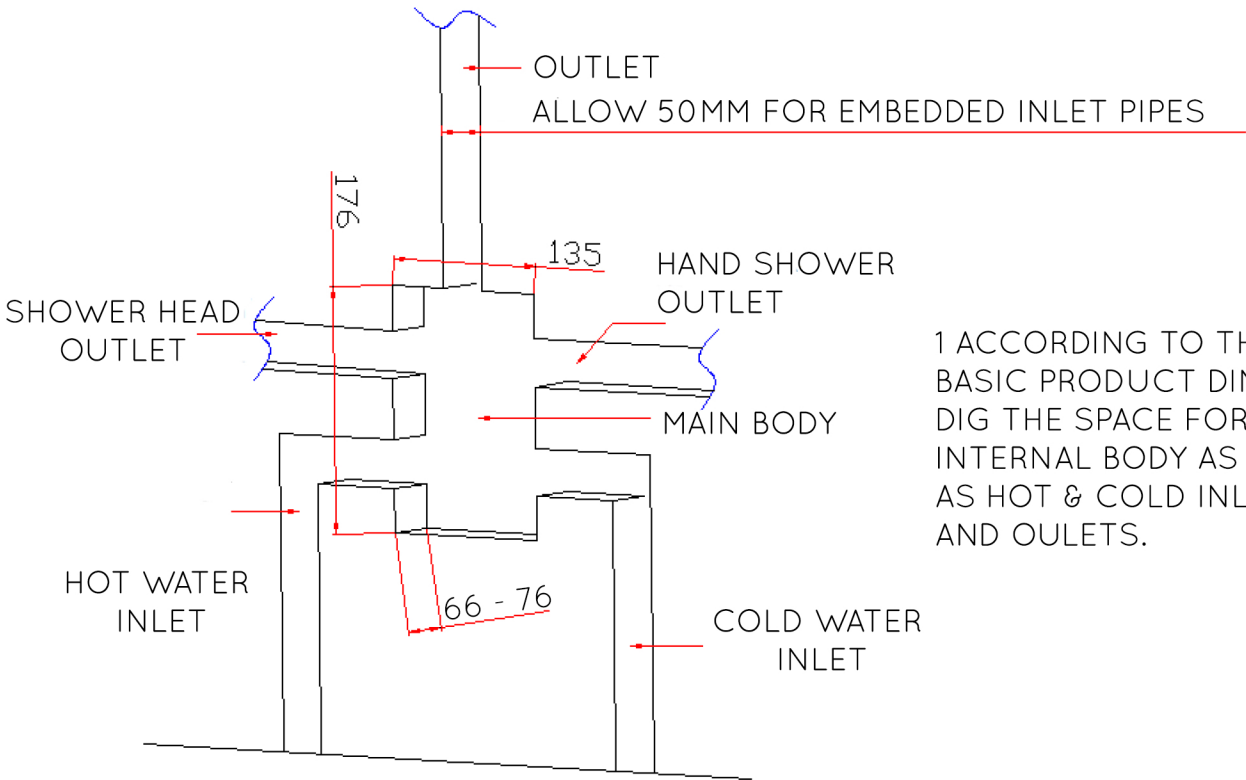
---

PARTS LIST

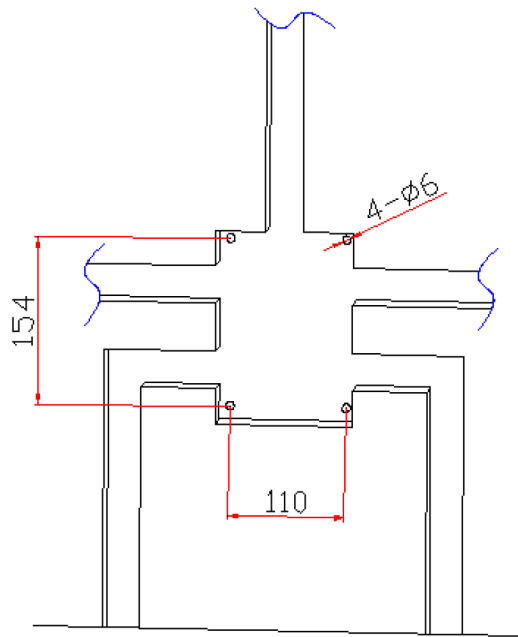


NO.	NAME	QTY
1	EXPANSION PARTICLES	4
2	TAPPING SCREW	4
3	EMBEDDED BODY	1
4	COVER PLATE	1
5	HAND WHEEL	1
6	2.5MM HEXAGONAL WRENCH	1

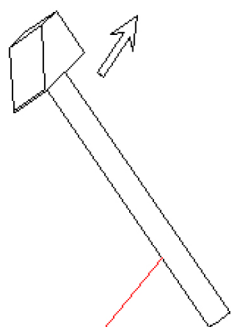
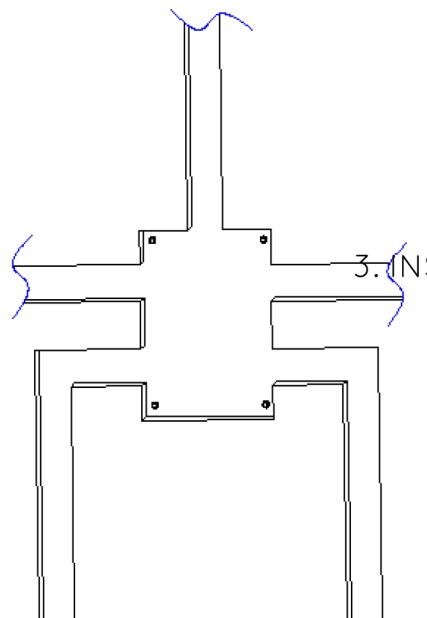
INSTALLATION STEPS



1 ACCORDING TO THE BASIC PRODUCT DIMESIONS DIG THE SPACE FOR THE INTERNAL BODY AS WELL AS HOT & COLD INLETS AND OULETS.

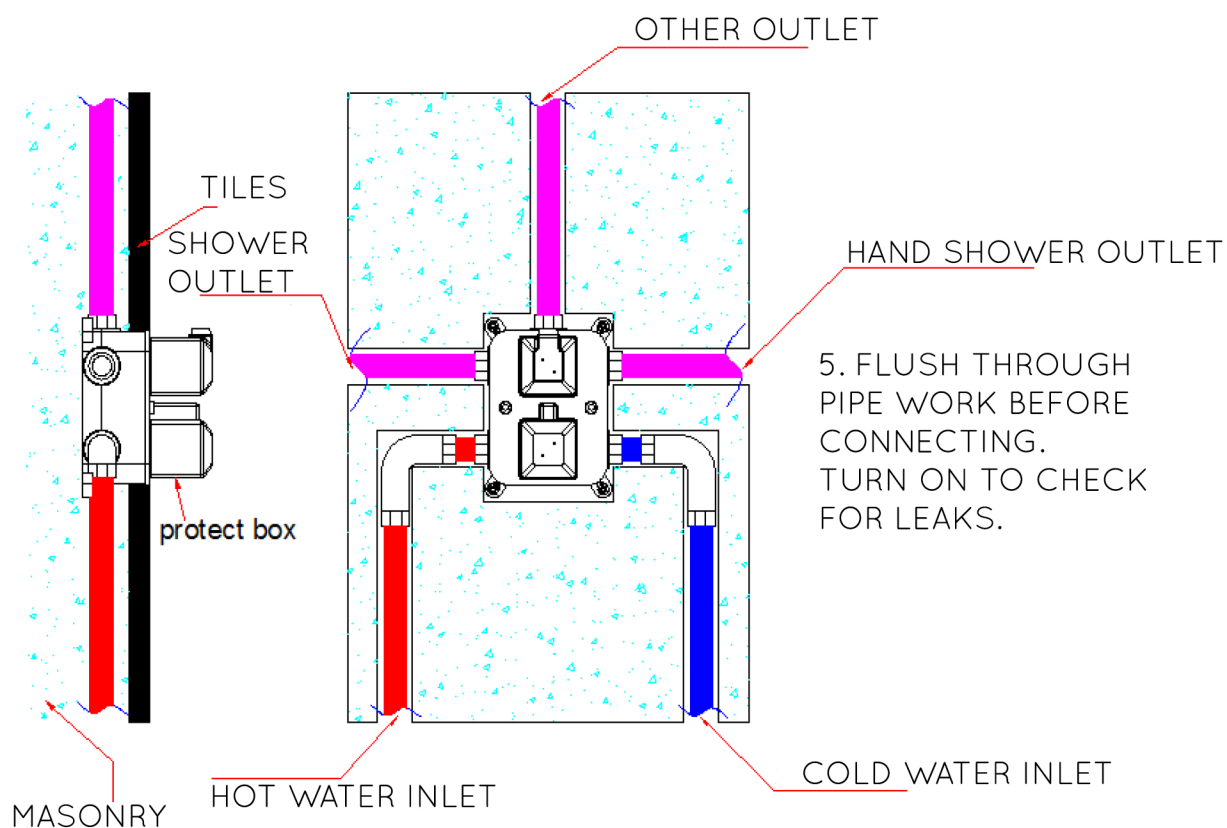
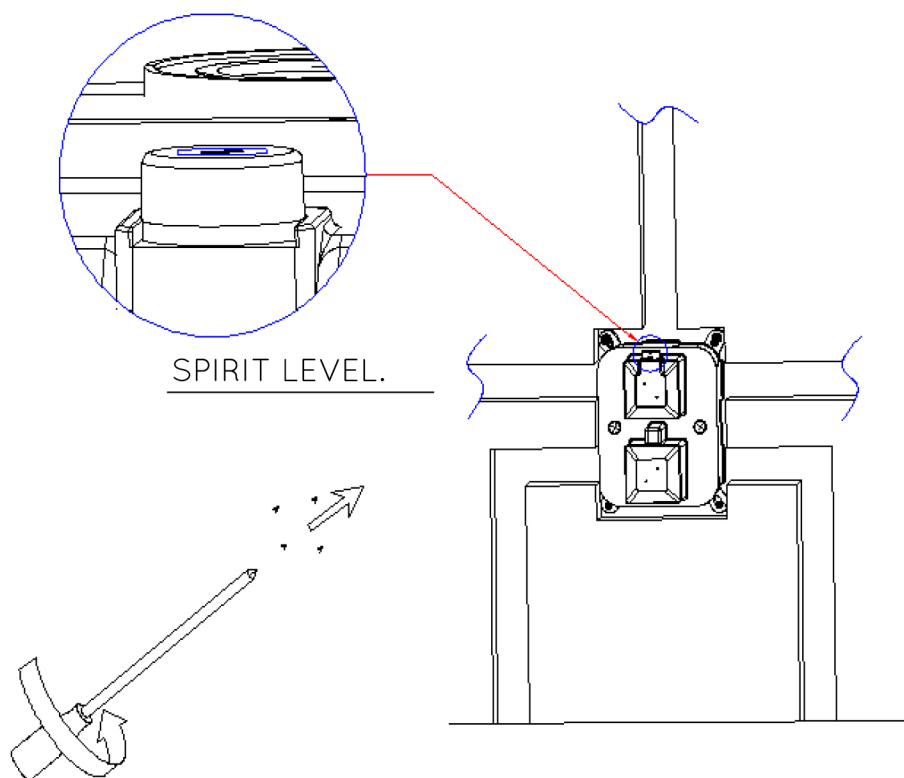


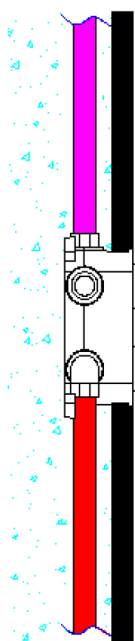
2. MARK AND DRILL 6MM HOLES  
ACCORDING TO THE POSITION  
OF THE FIXING POINTS



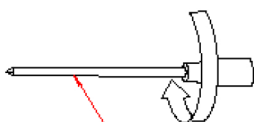
hammer

4. LEVEL THE INTERNAL BODY  
AND FIX ON THE WALL.

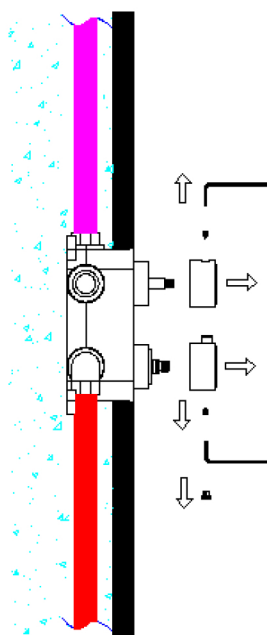




6. LOOSEN THE SCREWS  
ON THE PROTECTIVE COVER  
WITH CROSSHEAD SCREWDRIVER  
AND REMOVE.

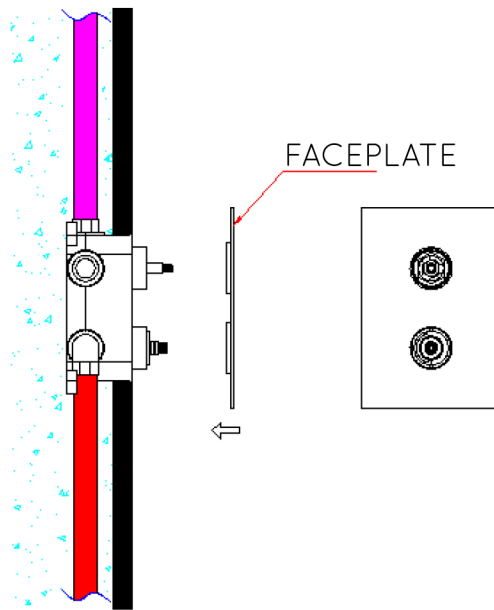


PHILLIPS  
SCREWDRIVER.

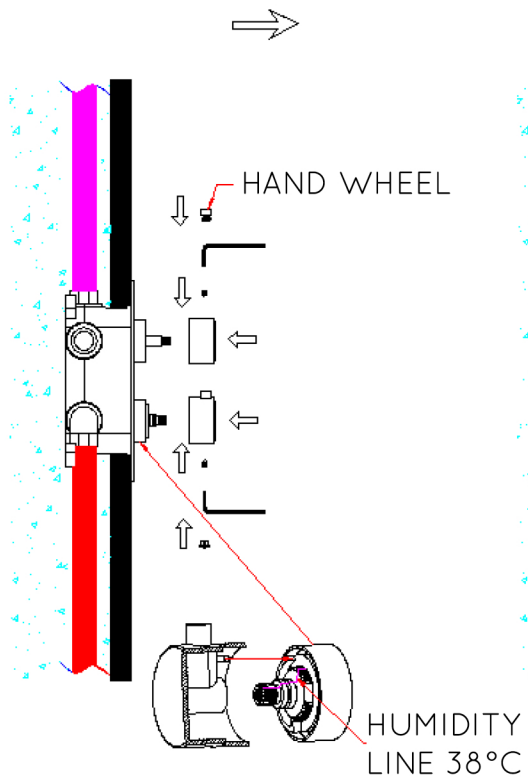


7. FIRST REMOVE THE THERMOSTAT  
COLOUR BUTTON.  
USE THE 2.5MM ALLEN KEY TO RELEASE  
THE HAND WHEEL BY COUNTER  
CLOCKWISE DIRECTION AND REMOVE.

8. INSTALL THE FACEPLATE  
ON THE VALVE BODY.



9. INSTALL OUTLET HANDWHEELS  
IN THE REVERSE ORDER OF  
PREVIOUS UNINSTALL.  
DO NOT ROTATE THE VALVE OF  
THE THERMOSTAT HANDWHEEL.

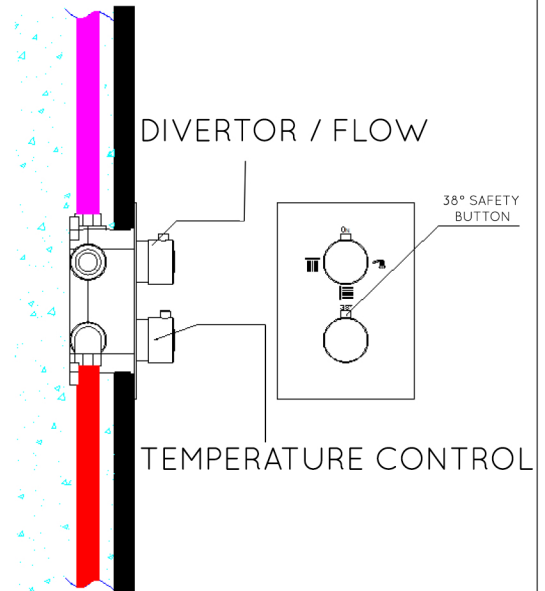


KEEP THE BUTTON DIRECTION  
ALIGNED WITH THE WATER  
OUTLET PIPE.  
INSTALL HAND WHEEL ACCORDING  
TO THE CLOCKWISE DIRECTION.

## USAGE METHOD

USE THE TOP CONTROL TO OPEN AND REGULATE FLOW AND DIVERT BETWEEN FUNCTIONS.

USE THE THERMOSTAT HAND WHEEL TO ADJUST THE TEMPERATURE.



## ATTENTION

1. THE VALVE BODY HAS BEEN PRE-SET. PLEASE DO NOT DISASSEMBLE.
2. HOT WATER TEMPERATURE 55-80°C. COLD WATER TEMPERATURE 5-29°C  
THE ADVISED WATER TEMPERATURE IS 15°C.
3. EMBEDDED MARK ON THE VALVE BODY OF "C" INDICATES WHERE TO CONNECT COLD WATER. "H" INDICATES THE HOT WATER CONNECTION.  
HOT & COLD WATER PRESSURE SHOULD NOT EXCEED 20% DIFFERENCE.
4. VALVE WATER PRESSURE MIN 1 BAR, MAX 6 BAR. RECOMMENDED 3 BAR PRESSURE.  
IF YOUR WATER PRESSURE EXCEEDS 5 BAR THEN A PRESSURE RELIEF VALVE IS REQUIRED ON THE PIPEWORK.
5. THE CONSTANT TEMPERATURE IS ADJUSTED UNDER THE SPECIFIC FACTORY CONDITIONS AND THE PRODUCT MAY VARY WITH THE CHANGE OF WORKING WATER TEMPERATURE.  
A DIFFERENCE OF +/- 2°C IS PERCEIVED AS NORMAL. IF THE DIFFERENCE IS LARGER THEN IT SHOULD BE ADJUSTED BY A PROFESSIONAL.

## CARE & MAINTENANCE

1. TO KEEP THE SURFACE OF THE PRODUCT BRIGHT AND CLEAN, PLEASE CLEAN REGULARLY.

- A. USE FRESH WATER TO WASH AND DRY WITH A SOFT CLOTH.
- B. DO NOT USE ABRASIVE CLEANING AGENTS, ABRASIVE CLOTH OR PAPER.
- C. DO NOT USE ANY ACIDIC CLEANING AGENTS.

2. IF IT IS NOT EASY TO REDUCE THE FLOW OR TEMPERATURE PLEASE REMOVE THE IMPURITIES ON THE FILTER ACCORDING TO THE FOLLOWING STEPS:

- A. USE THE CORRECT TOOLS TO OPEN THE WATER INLET FITTINGS ON BOTH SIDES.
- B. WASH THE IMPURITIES OFF THE WATER INLET FILTER NET.
- C. TO REINSTALL THEN OPEN THE WATER SUPPLIES.

