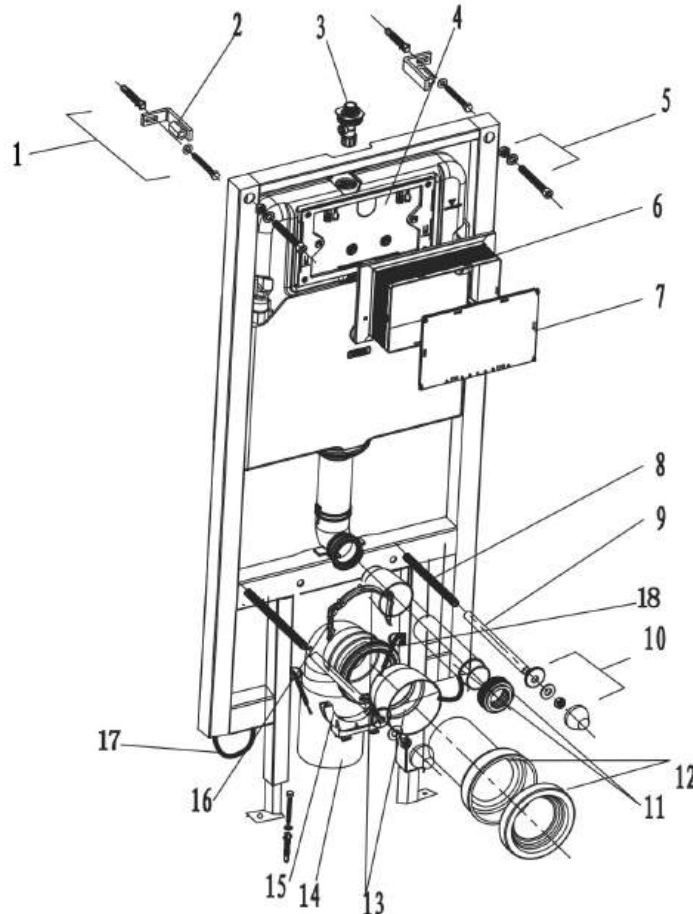


Cistern for Smart Toilets



List of main installation accessories

NO.	Description	Qty	Function
1	M8 * 60 expansion screw	4	Fix the bracket to the wall and ground
2	Stretching bracket	2	Fixed iron frame
3	Angle valve	1	Water inlet and switch
4	Pressing plate	1	Sealing and locking key bracket
5	M10 * 100 screw	2	Wall bracket adjustment screw
6	Square Box	1	Reserve maintenance and panel openings at wall installation locations
7	Square frame sealing plate	1	Prevent dust and sediment (no retention required after installation)
8	M12 * 160 connecting toilet bolt	2	Connect the wall mounted toilet
9	Rubber hose	2	Protect the bolt teeth of the toilet to prevent cement from getting on the teeth during construction
10	Nut with gasket, fixed meson with decorative bowl	2	Secure the toilet to prevent it from sliding and seal the bolts
11	Flushing straight pipe and rubber ring	1	Connect the water tank to the toilet
12	Blowdown straight pipe and rubber ring	1	Connect the toilet to the sewage elbow
13	Dust prevention cups for flushing and drainage bends	2	Dust and cement prevention during construction
14	Sewage elbow	1	Connect the sewage straight pipe and the wall sewage pipe outlet
15	Blowdown elbow buckle	1	Fixed sewage elbow
16	Blowdown elbow buckle	1	
17	Water pipe		
18	trachea		

Important instruction:

1. Please adhere to the following installation instructions. We shall not be responsible for failures and loss that are contributed to improper installation.
2. Please confirm the fixation location of frame prior to installation and obtain the finished floor surface. Draw FFL on installation wall and follow it as baseline from ZERO (0) level.
3. The instructions have been composed based in the latest product specifications. We reserve the right to make modifications to the packaging and specifications without providing prior notification.

NOTES:

1. Mount before bricks building.
2. All size unit in MM.
3. Follow the material product, should there is an unconformity with drawing.

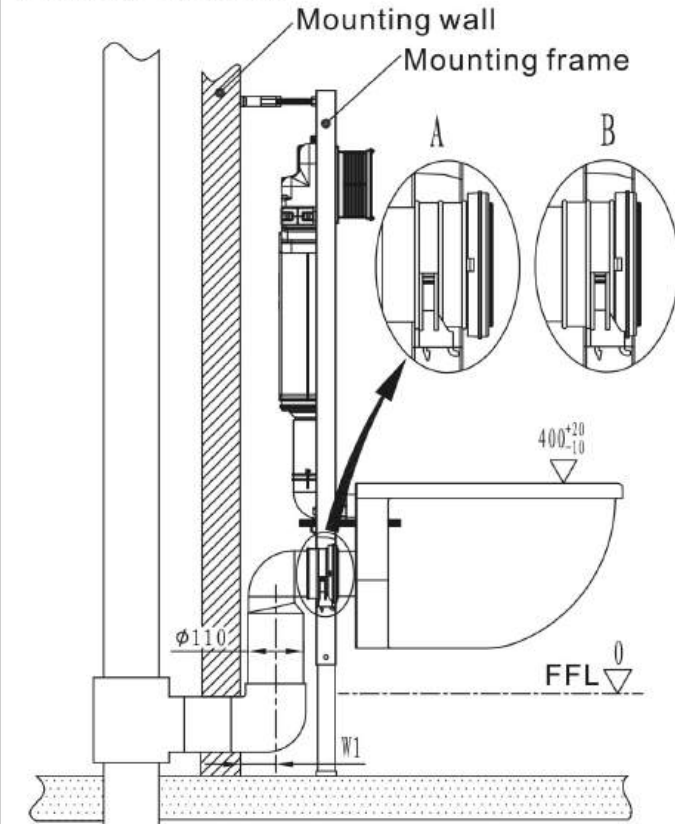
Finished Floor.



1、 Drainage System Layout

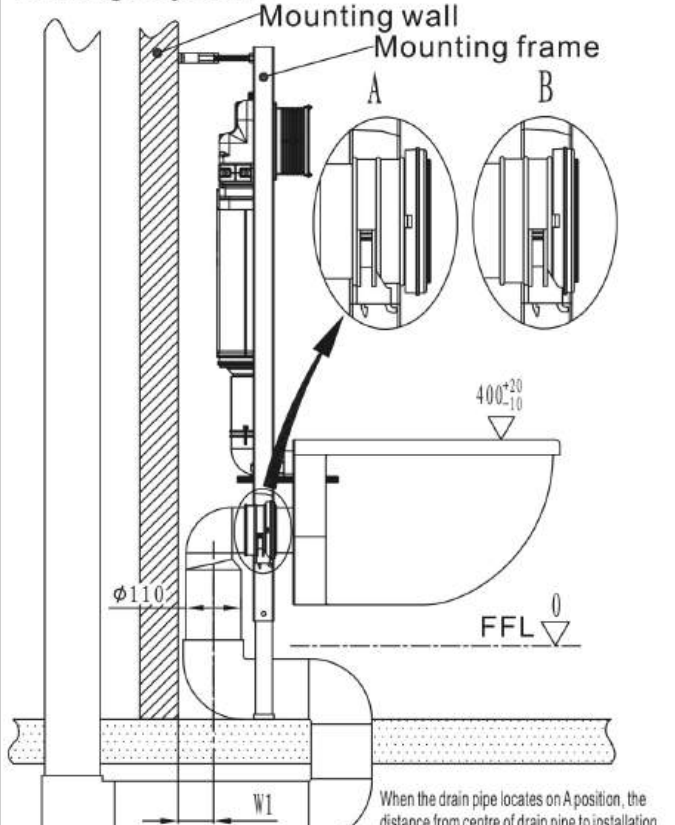
Drawing 1 to 3 are three different installation systems for drain pipe. Customer should confirm whichever installation system according to drainage outlet position. If drainage outlet does not fall within the three systems, customer should follow one of three drainage system layout to correspond installation of our concealed cistern.

Drainage System 1



When the drain pipe locates on A position, the distance from centre of drain pipe to installation wall (W1) should be 70-100. When the drain pipe locates on B position, the distance from centre of drain pipe to installation wall (W1) should be 70-80.

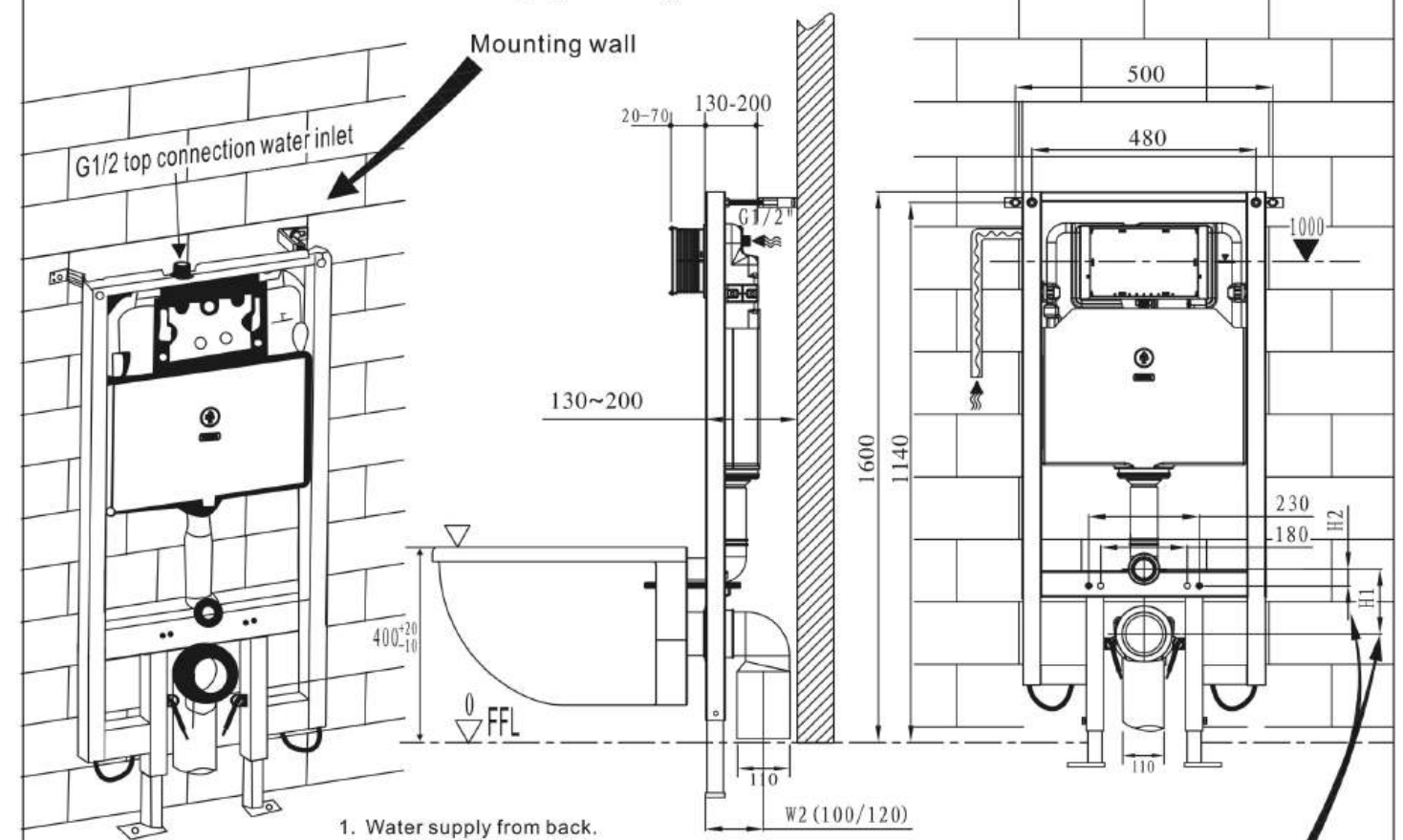
Drainage System 2



When the drain pipe locates on A position, the distance from centre of drain pipe to installation wall (W1) should be 70-100. When the drain pipe locates on B position, the distance from centre of drain pipe to installation wall (W1) should be 70-80.

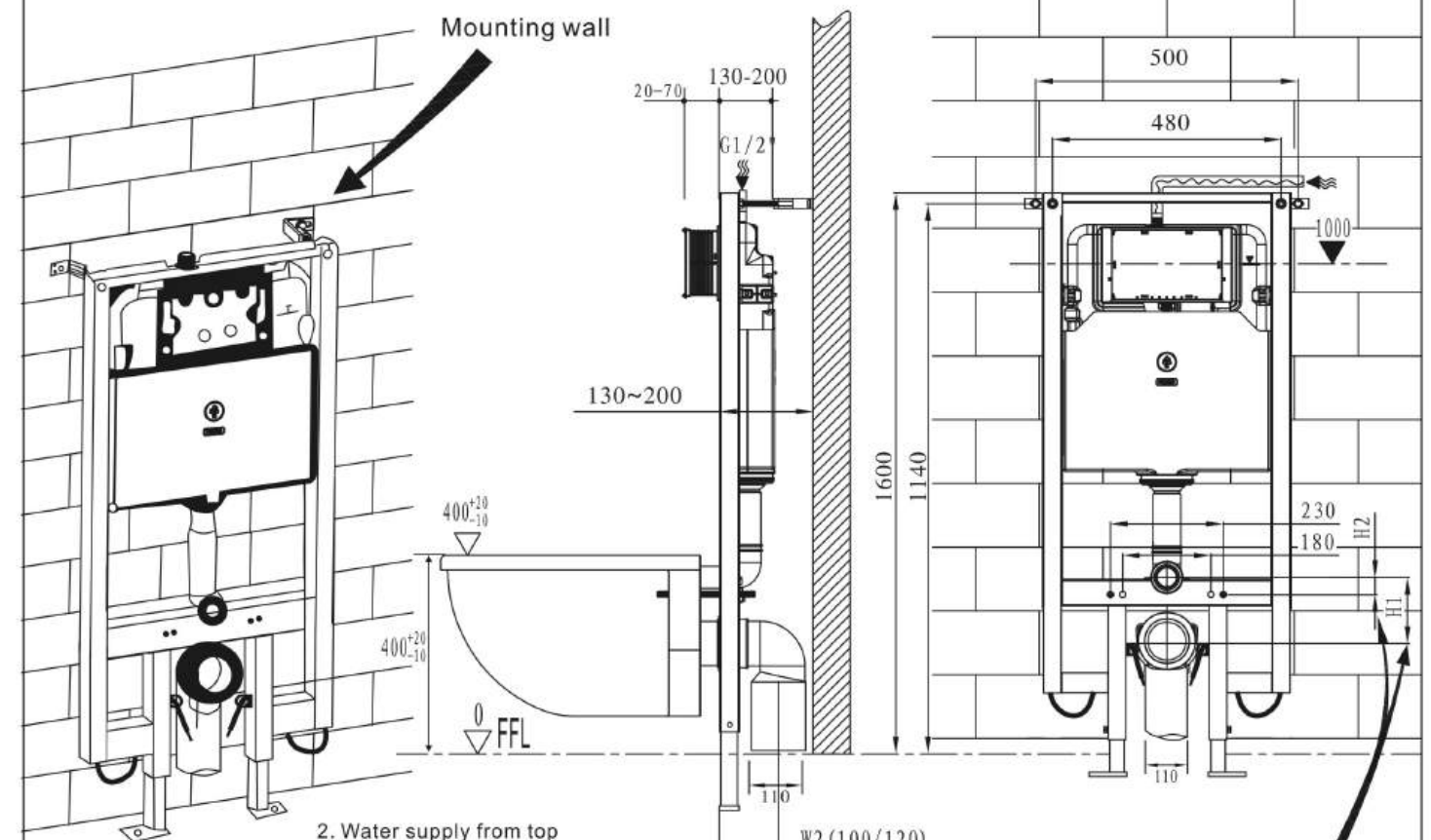
When the drain pipe locates on A position, the distance from centre of drain pipe to installation wall (W1) should be 70-100. When the drain pipe locates on B position, the distance from centre of drain pipe to installation wall (W1) should be 70-80.

2 General dimension and water supply drawing



1. Water supply from back. (water supply should be connected to angle valve inside cistern)

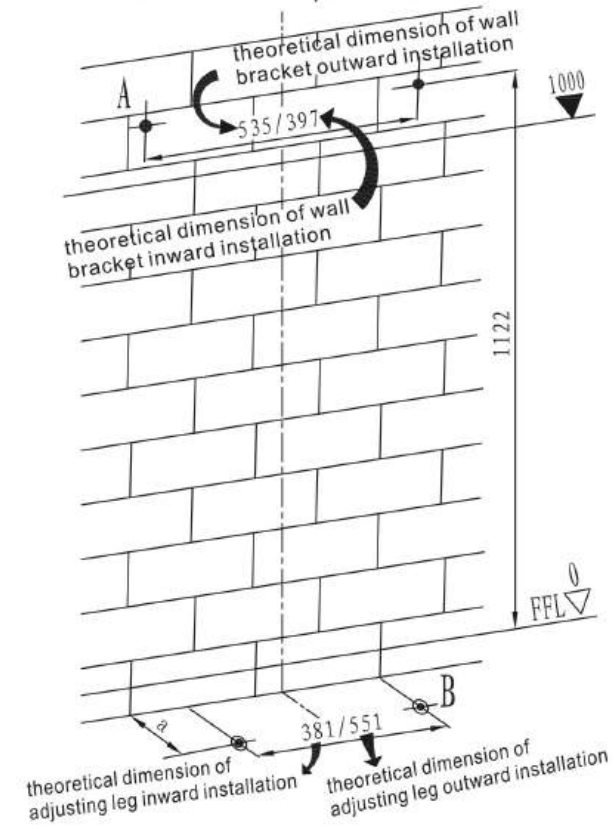
Dimension of H1 & H2 subject to available parts.



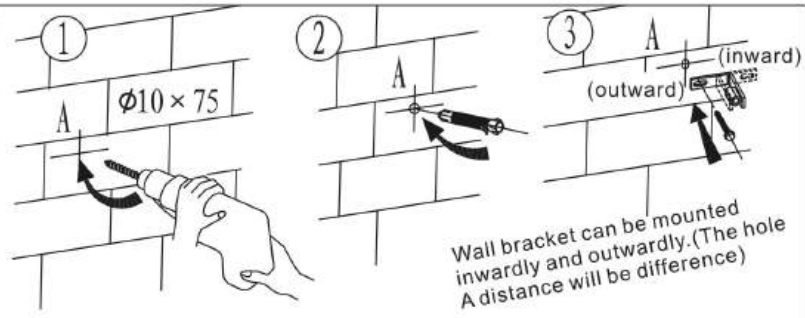
2. Water supply from top (water supply should be connected to angle valve inside cistern)

Dimension of H1 & H2 subject to available parts.

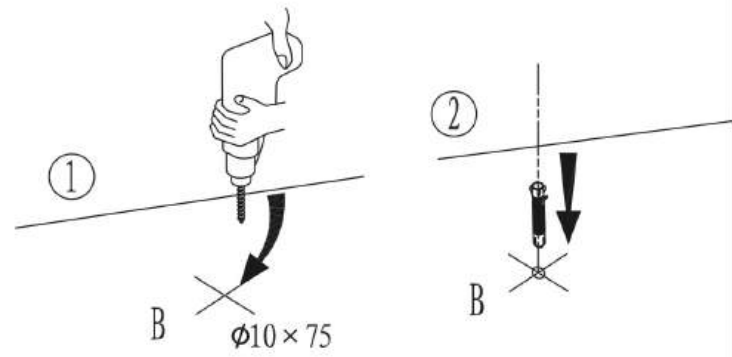
3. Drill holes on mounting wall and floor and install expansion screws



A dimension according to practical location of flushing pipe
 ☆Note: Above drilling are theoretical dimensions of frame mounting.
 Please follow by the practical location of frame.

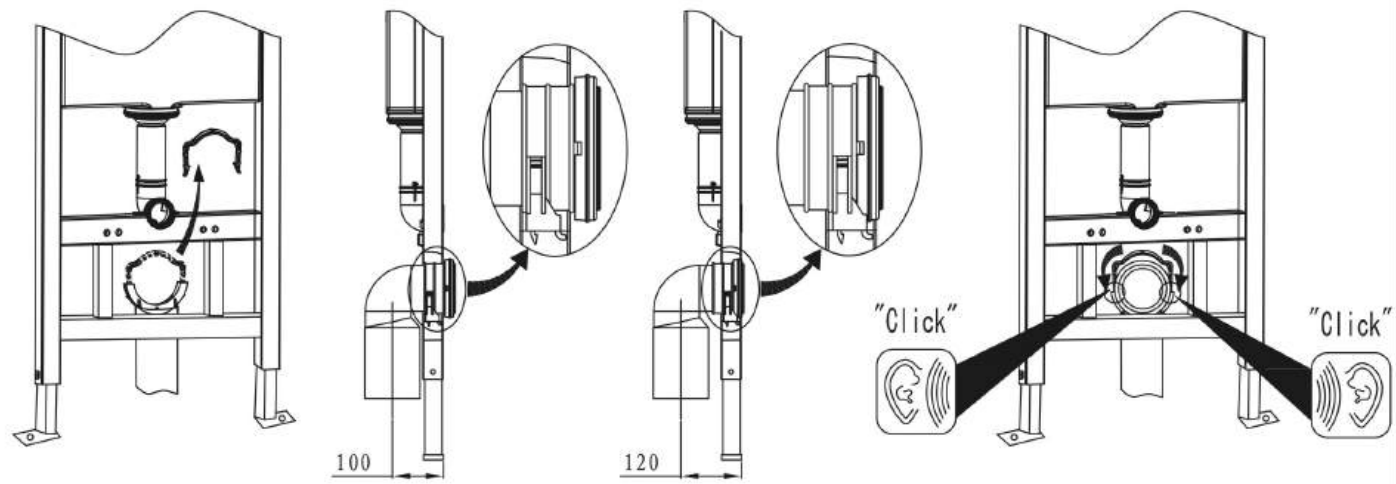


Drill a hole of $\phi 10 \times 75$ → insert expansion screw → fix the wall bracket into wall



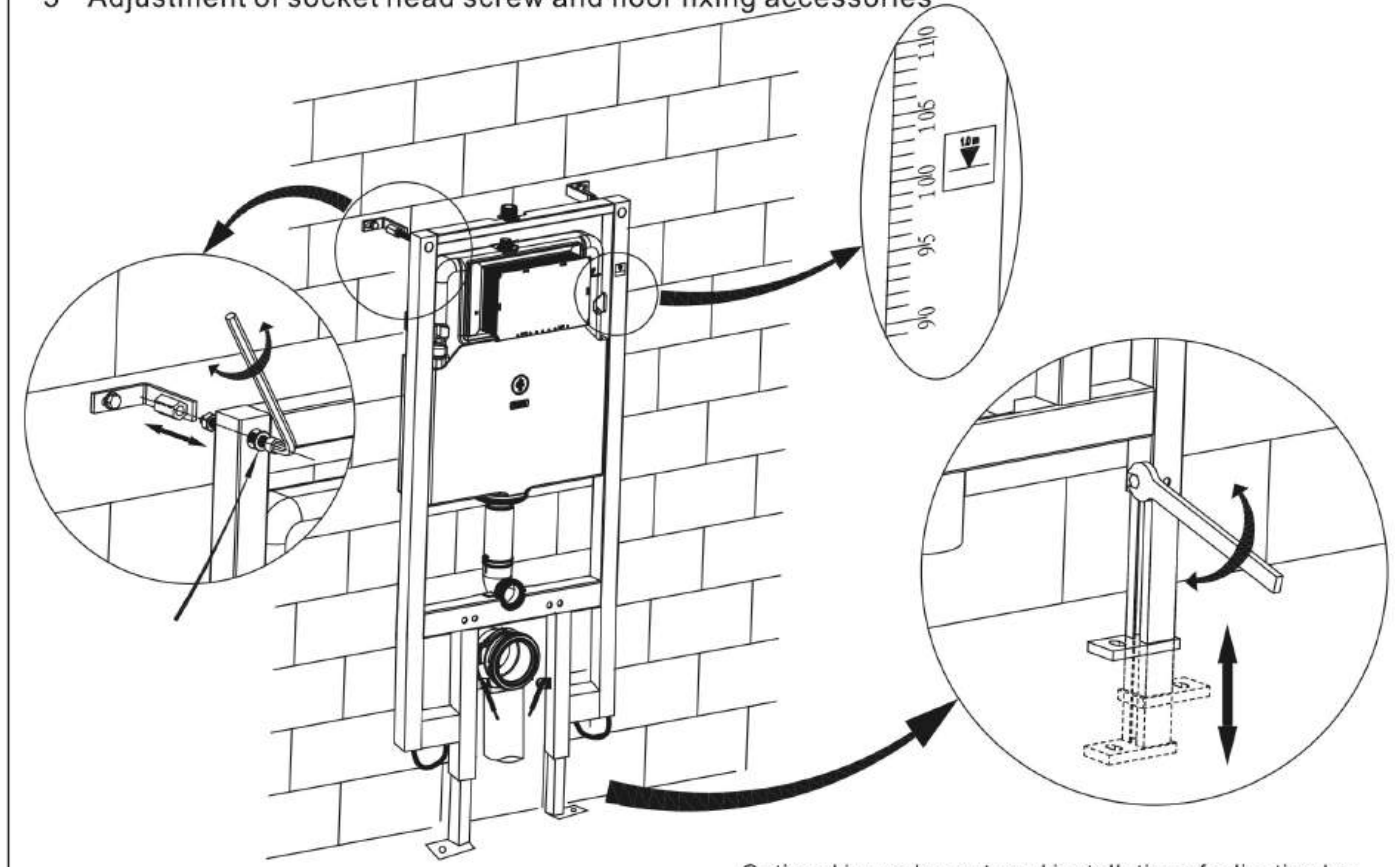
Drill a hole of $\phi 10 \times 75$ → insert expansion screw

4. Installation of draining syphon

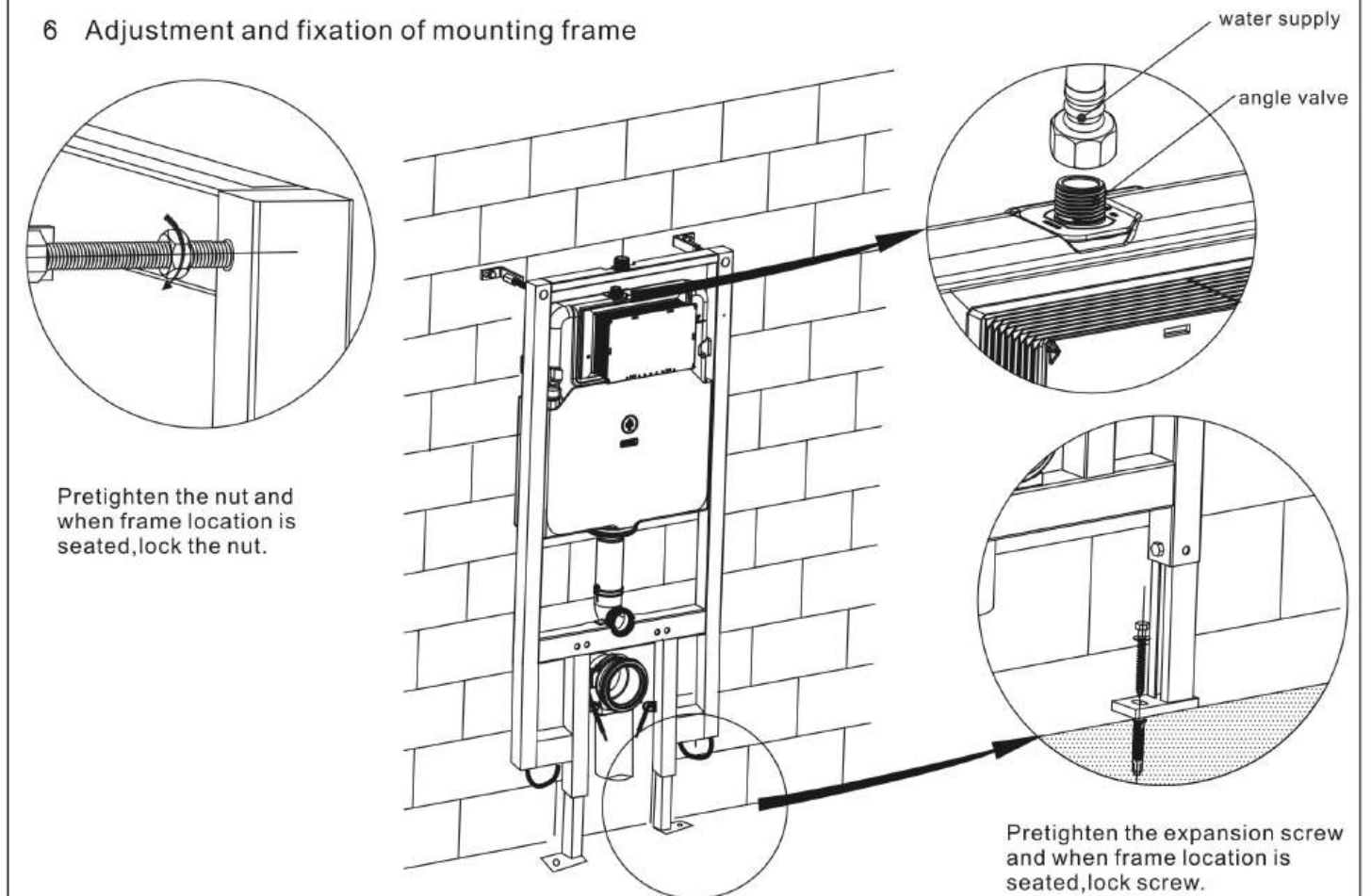


Remove the mounting bracket → Mount draining syphon (optional installation distance of 100 or 120) → Fasten the mounting bracket

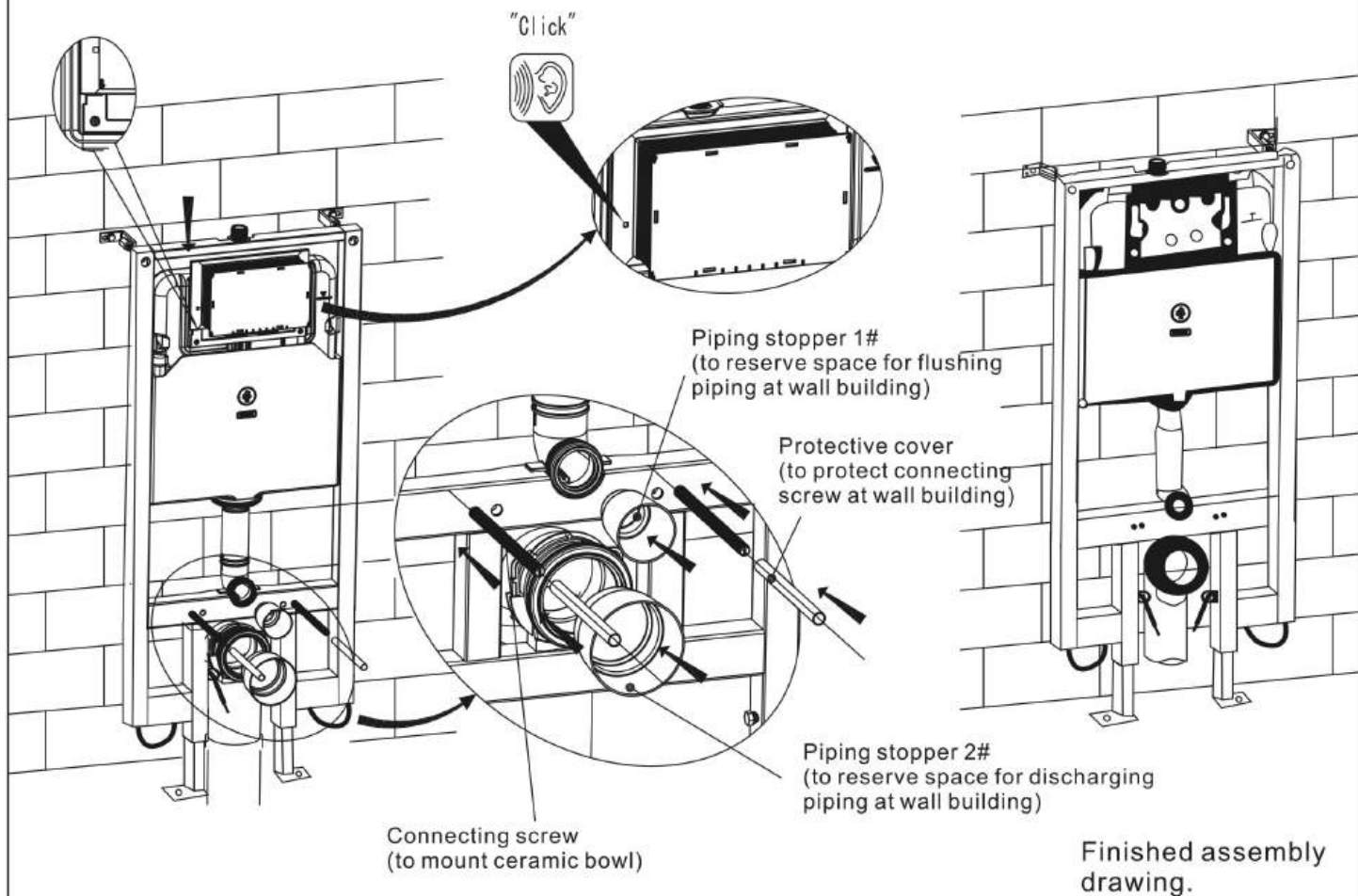
5. Adjustment of socket head screw and floor fixing accessories



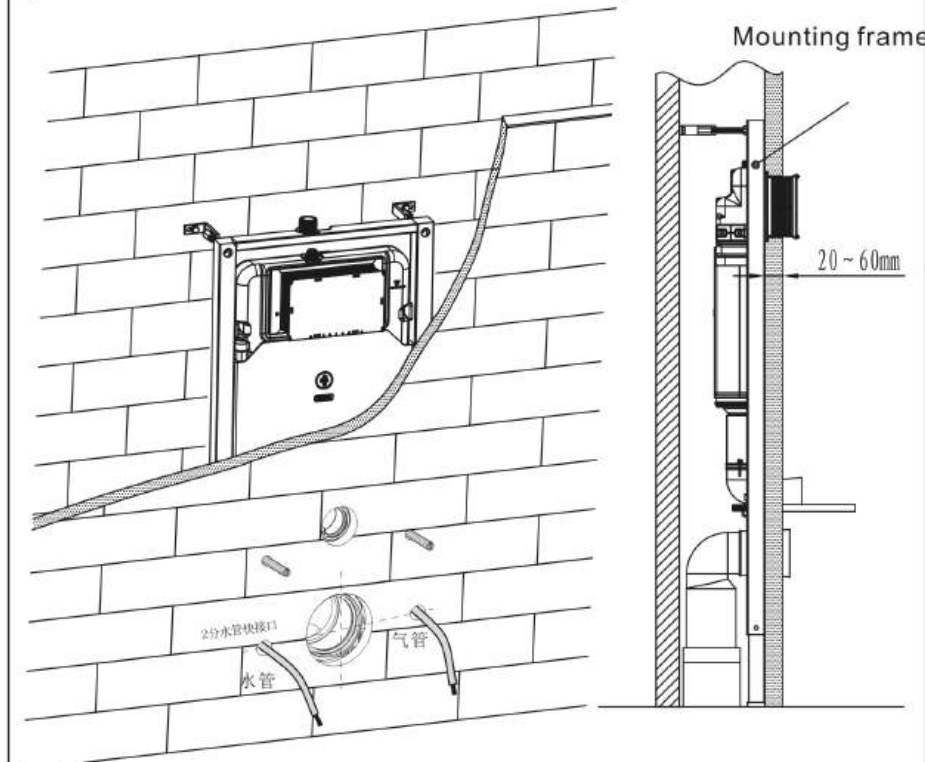
6. Adjustment and fixation of mounting frame



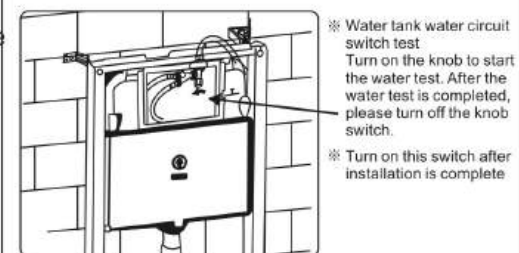
7. Mounting of installation accessories



8. Wall thickness range 20~60mm (from frame outside surface to finished wall)



9. Water tank water circuit switch test



10. Remove the cover plate

Dismantling method for cover plate and ceramic: First remove the screw cover, then remove two stainless steel machine bolts, and finally support both sides of the cover plate to lift it up.



11. Installation of toilet

