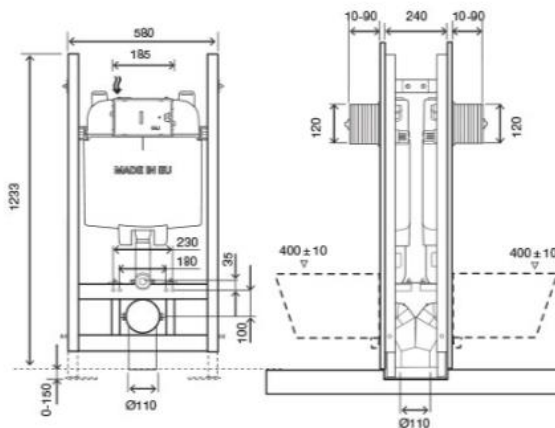


Technical Sheet

Mechanic Double Free Standing



Product Identification

Mechanic Double Free Standing

Definition and Application

- Preassembled structure to be secured to the floor only for the installation in light walls
- Compatible with all wall-hung WC pans.

Technical Features

Structure

- In painted tubular corrosion resistant
- Height adjustable from 0 to 150mm
- Depth adjustable outlet bend
- Tested for 400kg load

Cistern

- Dual flush of 6/3 litres (adjustable to 4.5/3 litres)
- Mechanic actuation
- Working pressure from 0,1 to 16 bar
- Resistance to atmospheric humidity (Hr <90%).
- Polypropylene (PP) cistern highly resistant and inalterable to thermal stress
- Certified cistern according KIWA/SABS/SAI/WRAS standards
- CE EN 14055 marking CL1
- Equipped with Azor Plus Inlet Valve, with delayed refilling (saves up to 9 litres of water per day) and silent according to the NF standard category Class I
- Supplied with anti-condensation lining
- "A" class for the Water Efficiency in compliance with the ANQIP Authority requirements

Millimetres measures

Technical Sheet

Mechanic Double Free Standing

Accessories

- 2 Discharge pipe \varnothing 110 x 250
- 2 Seal for discharge \varnothing 125
- 1 Connecting pipe \varnothing 40
- 2 Pan rubber seal \varnothing 40
- 2 Protective box
- 2 G 1/2" stop valve
- 2 Protection sponge for the stop valve
- 1 "Y" outlet bend \varnothing 110
- 2 Discharge pipe \varnothing 56 x 150
- 2 Protection pipe \varnothing 110
- 4 Connecting pipes

Fixing accessories for wall and floor structure

- 8 Screws self-tapping ZN3
- 8 Washers ZN DIN 125 M8
- 8 Nuts ZN DIN 934 M8
- 6 Bushing for metal structure

Fixing accessories for toilet bowl mounting on the structure:

- 2 Threaded rods M12
- 2 Nuts M12
- 2 Protection for threaded rod
- 2 Protection cover
- 2 Toilet centring washer
- 2 Washers Zn \varnothing 34